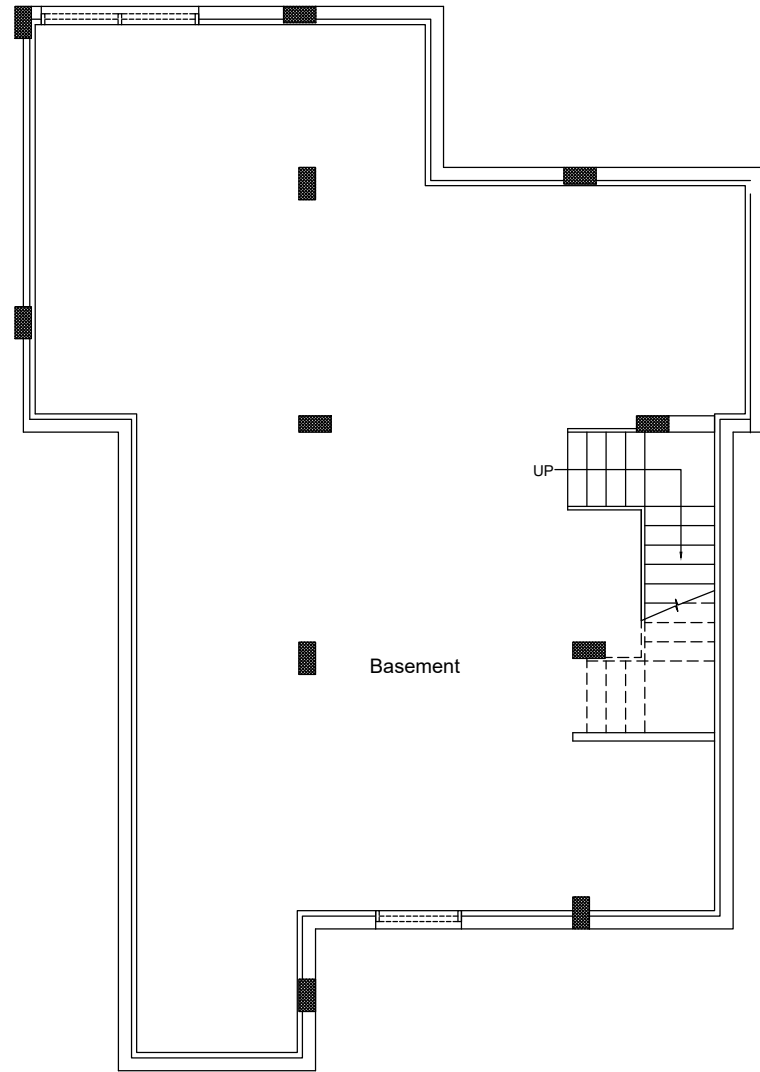
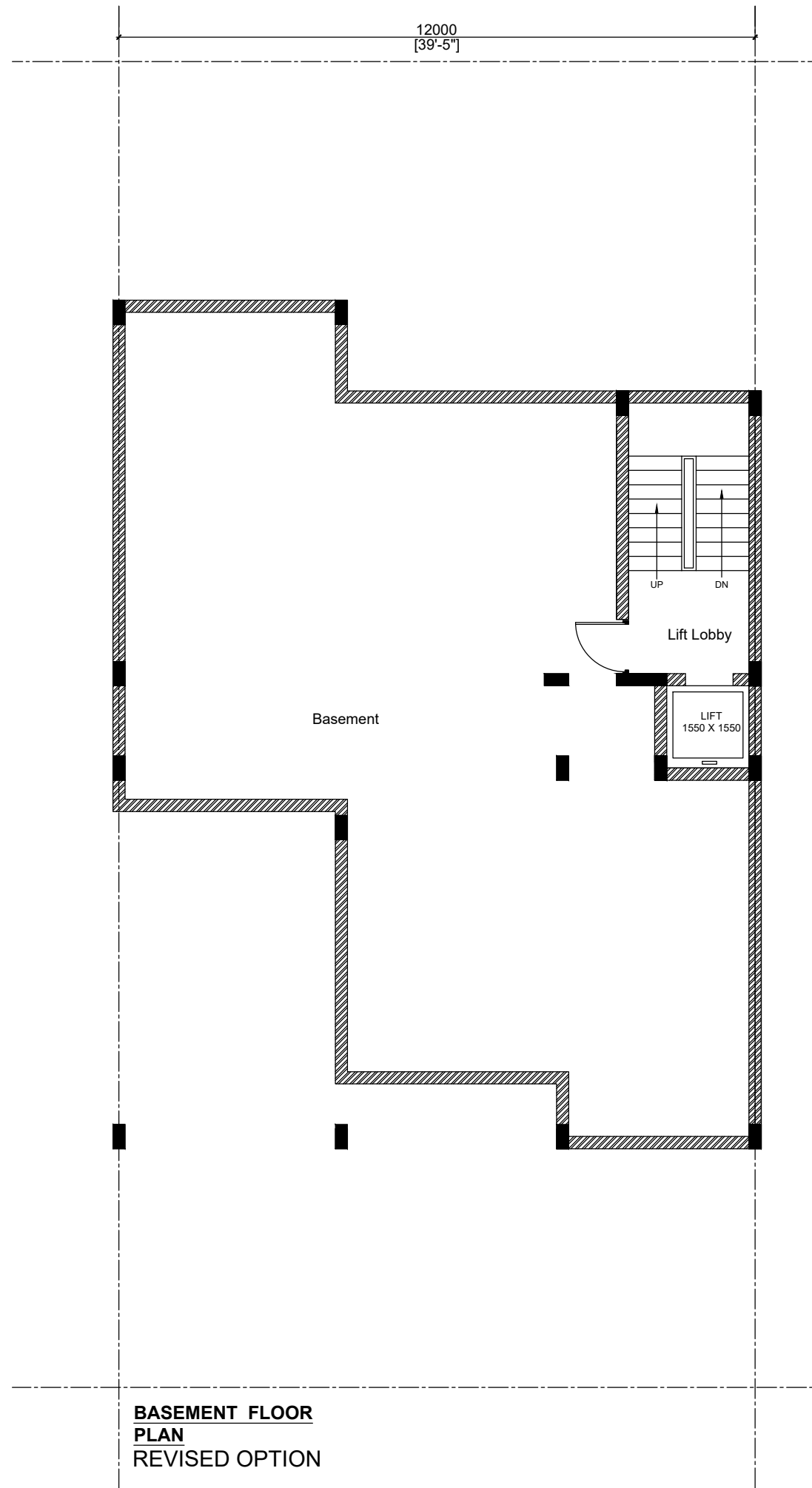


**TYPE C (300 SQM / 358.80 SQYDS)
WITH PURCHASABLE FAR**



**BASEMENT FLOOR PLAN
ORIGINAL OPTION**

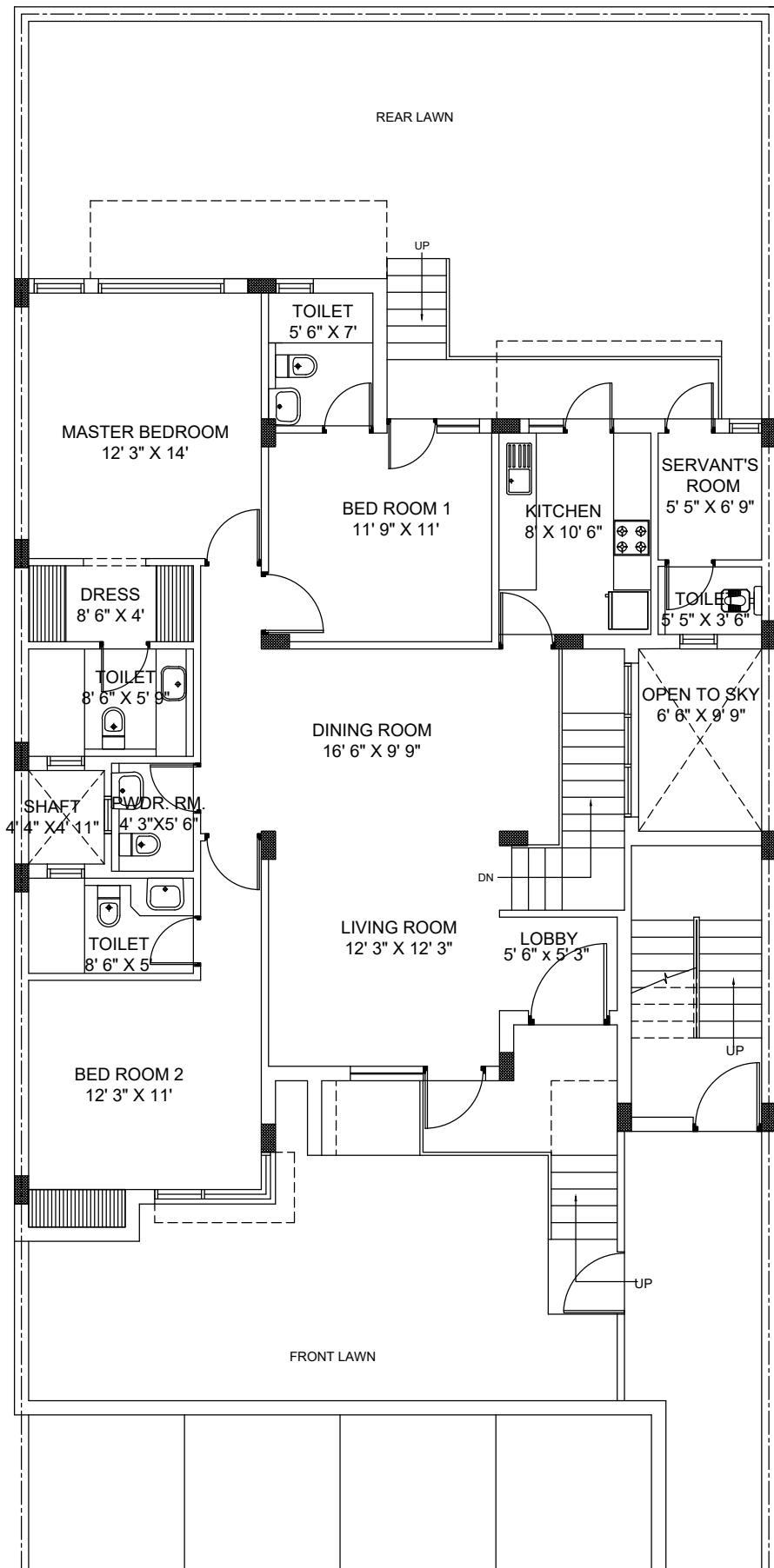


**BASEMENT FLOOR
PLAN
REVISED OPTION**

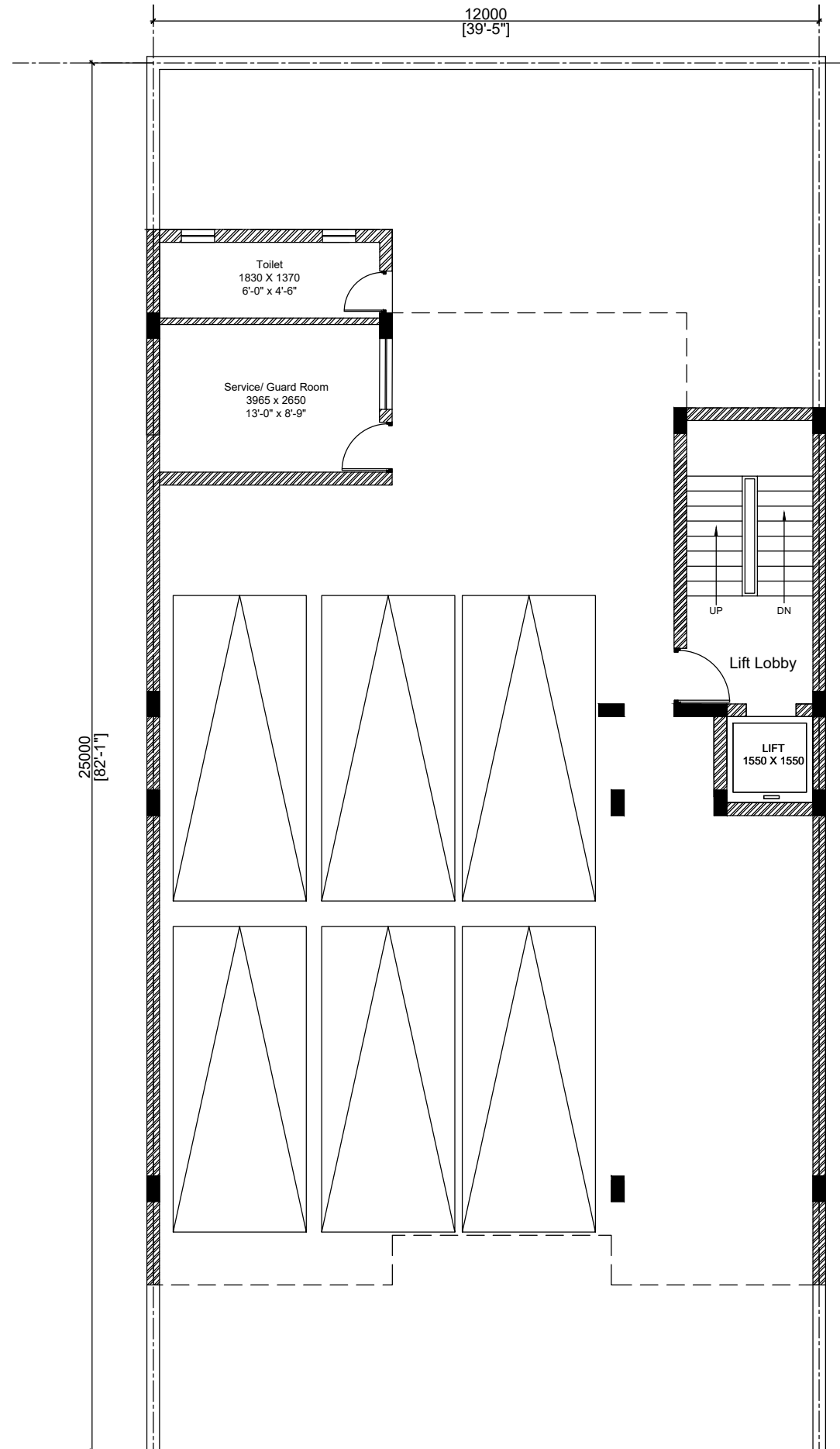
TYPE C (300 SQM / 358.80 SQYDS)		
FLOOR	SALEABLE AREA AS PER SOLD	SUPER AREA IN REVISED OPTION
	SQ FT	SQ FT
BASEMENT	1252	1590
STILT		2246
TYPICAL FLOOR	1685	2382

**NOTE:
1. THE LAYOUT IS SUBJECT TO APPROVAL FROM
COMPETENT AUTHORITIES**

TYPE C (300 SQM / 358.80 SQYDS) WITH PURCHASABLE FAR



**GROUND FLOOR PLAN
ORIGINAL OPTION**

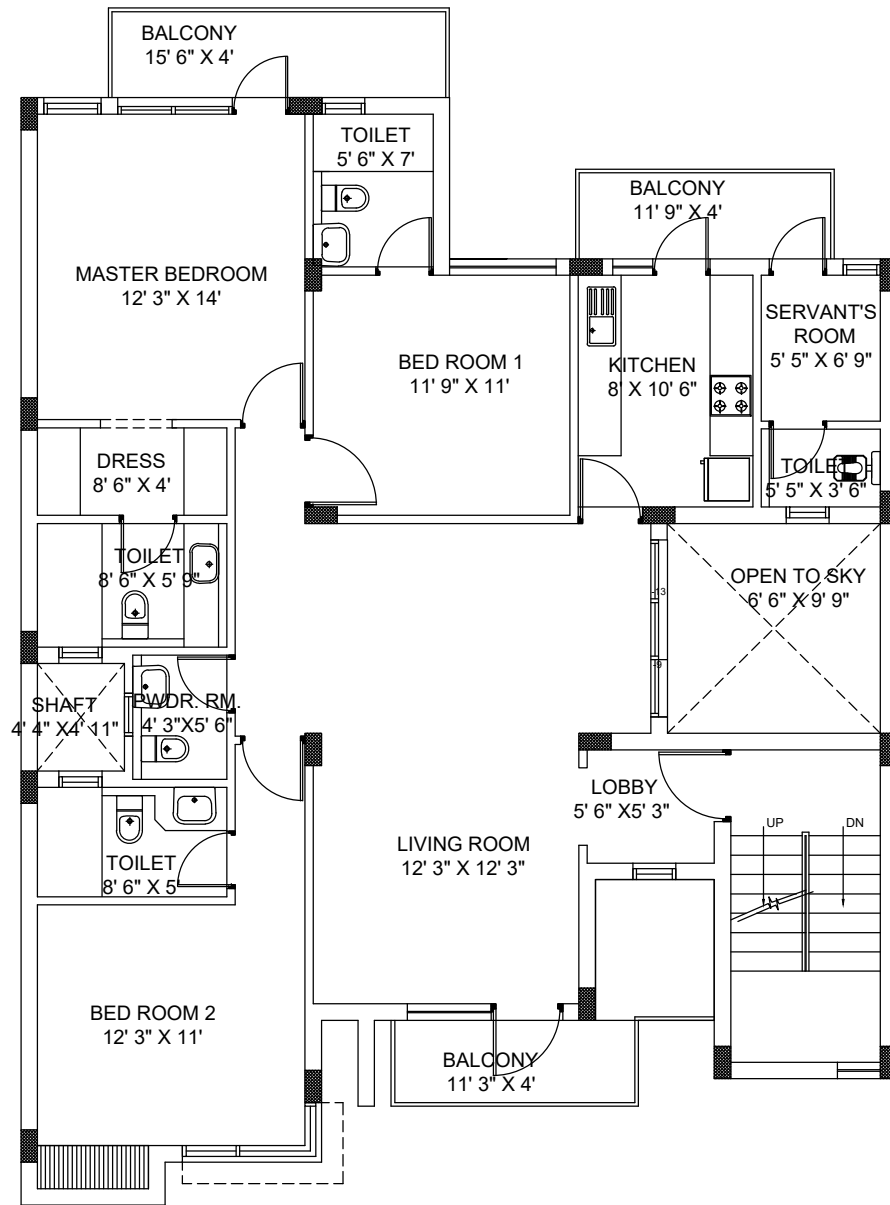


**STILT FLOOR PLAN
STILT FLOOR PLAN
REVISED OPTION**

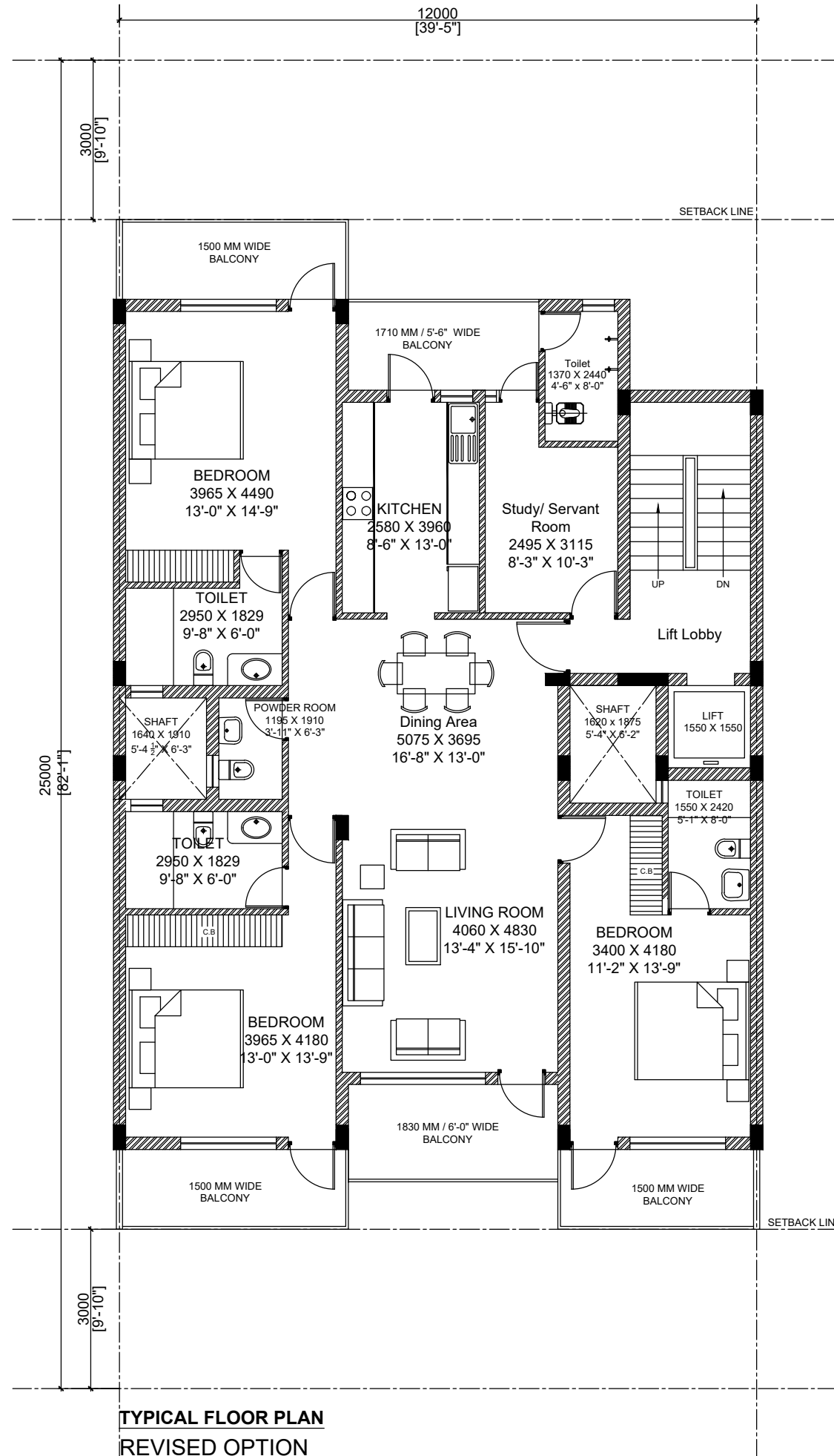
TYPE C (300 SQM / 358.80 SQYDS)		
FLOOR	SALEABLE AREA AS PER SOLD	SUPER AREA IN REVISED OPTION
	SQ FT	SQ FT
BASEMENT	1252	1590
STILT		2246
TYPICAL FLOOR	1685	2382

NOTE:
1. THE LAYOUT IS SUBJECT TO APPROVAL FROM COMPETENT AUTHORITIES

TYPE C (300 SQM / 358.80 SQYDS) WITH PURCHASABLE FAR



**FIRST FLOOR PLAN
ORIGINAL OPTION**



**TYPICAL FLOOR PLAN
REVISED OPTION**

TYPE C (300 SQM / 358.80 SQYDS)		
FLOOR	SALEABLE AREA AS PER SOLD	SUPER AREA IN REVISED OPTION
	SQ FT	SQ FT
BASEMENT	1252	1590
STILT		2246
TYPICAL FLOOR	1685	2382

NOTE:
1. THE LAYOUT IS SUBJECT TO APPROVAL FROM
COMPETENT AUTHORITIES