



— **unitech** —
Superb
AT UNIWORLD RESORTS



Just Close your eyes,

Hold your breath in for a moment

now exhale as slowly as possible.

Relax your mind, body and soul,

And let everything else go.



Welcome to sprawling acres of comfort and relaxation

Welcome to Uniworld Resorts

Welcome to blissful living!

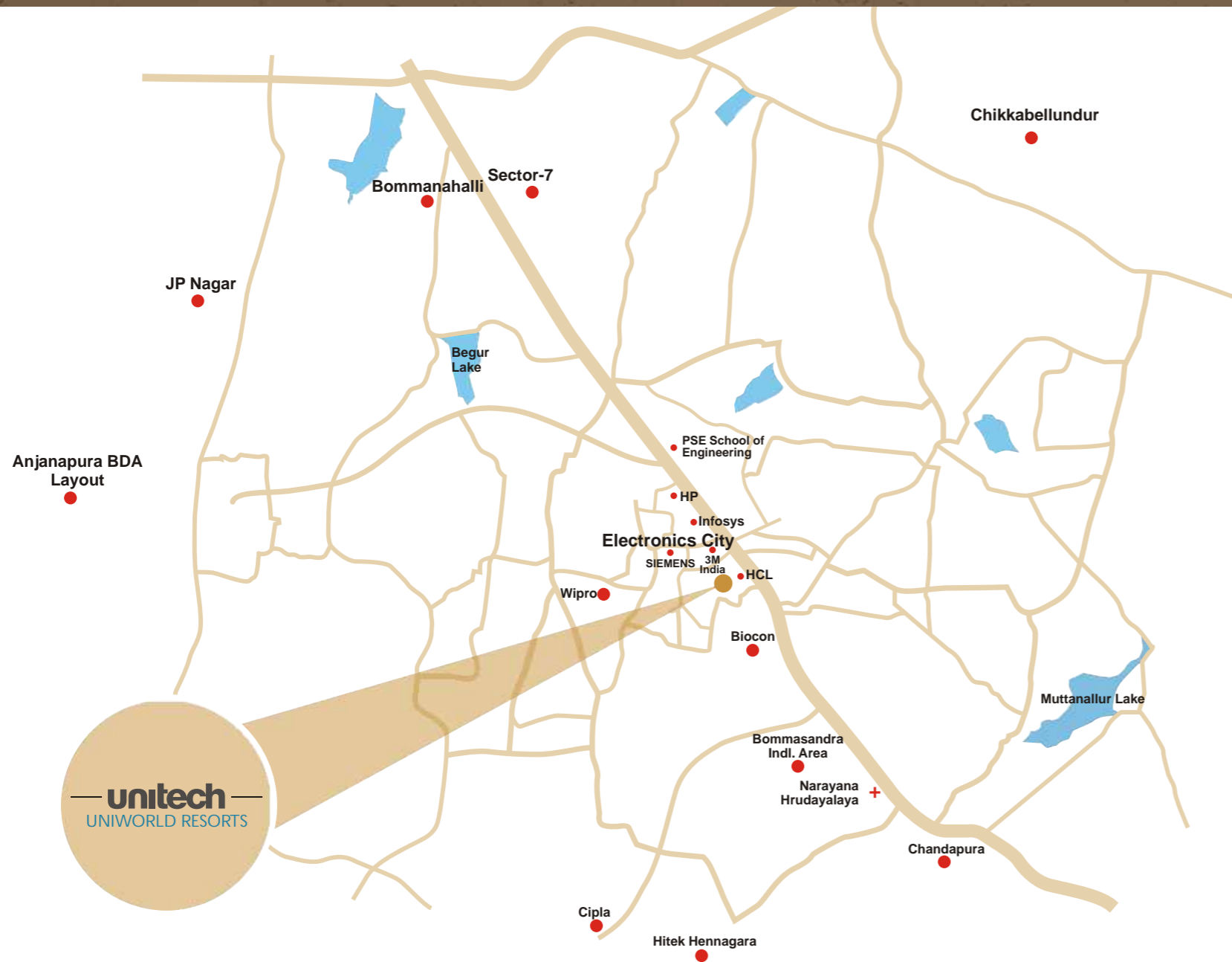
Spread across 20 acres of serenity and calmness, Uniworld Resorts is situated at the heart of Electronic City, Bangalore. Superb are select well-designed vastu compliant 3 & 4 bedroom apartments within Uniworld Resorts in sizes ranging from 1450-3750 sq.ft. to ensure you have the perfect match of design and space.

With a slew of environment friendly features like solar heating/lighting and rainwater harvesting these low rise premium apartments also have 24 x 7 power back-up, lifts, basement car parking and video door phones providing a luxurious lifestyle.

Being just a few minutes drive away from major IT campuses like Infosys, Wipro, HP, etc., and 1 km from the elevated Hosur Expressway, the location is ideal for walk-to-work culture as well as a fabulous investment destination.

Ensconced in a secure gated community, with minimum surface vehicular movement ensures you have complete peace of mind.

Come home to resort style living, at home!



Location Map



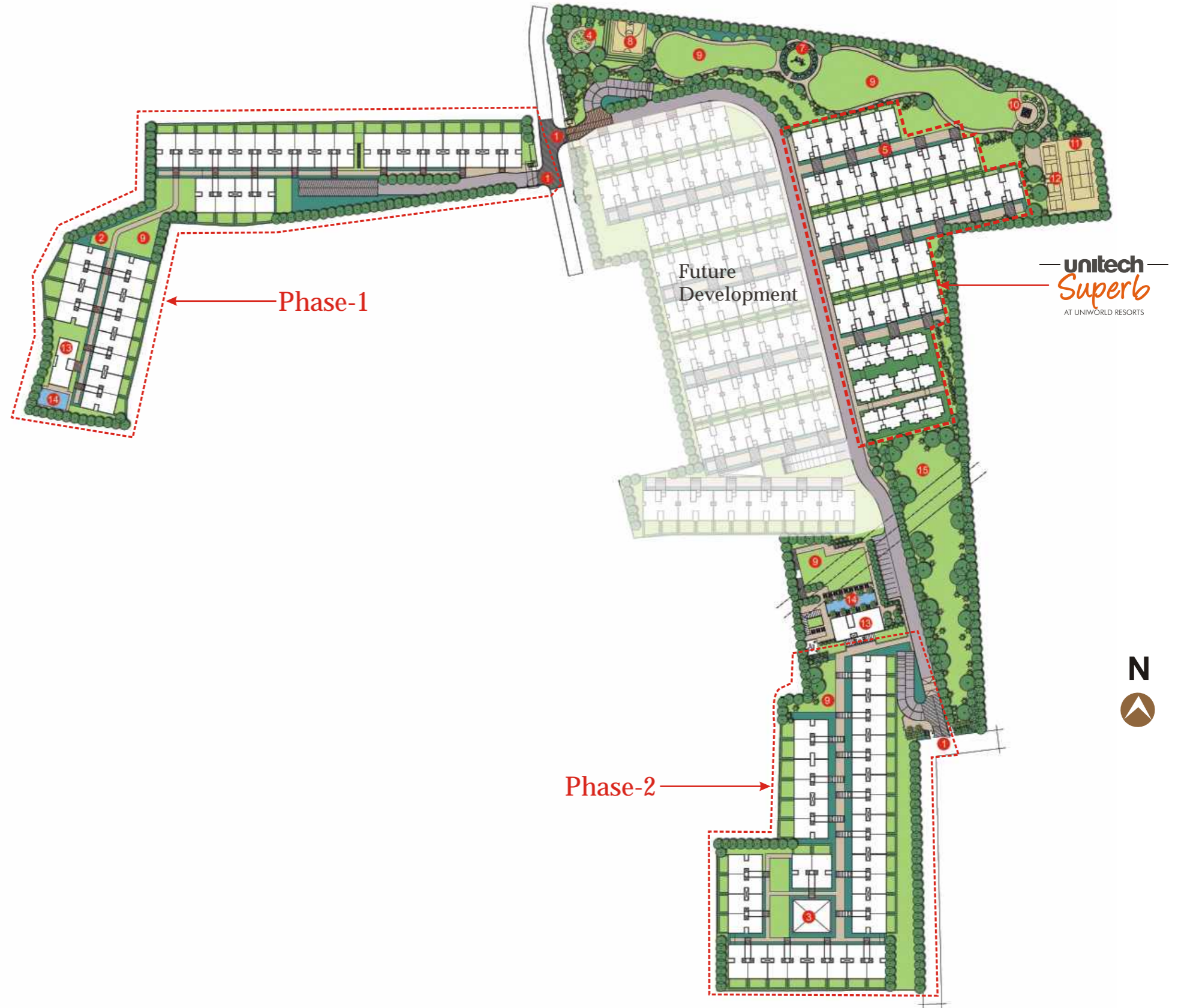
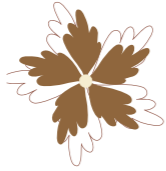
Just minutes away from the Hosur Road, near all major IT campuses, yet miles away from madness, Uniworld Resorts is nestled in the heart of bustling development of Electronic City Phase-I, Bangalore.

In addition to excellent location Uniworld Resorts is minutes away from places like Koramangalam, JP Nagar, etc. Also, within few minutes driving distances are world class school such as Christ Academy, Sunrise International Residential School, Sheerwood High, Podar International Radcliffe School, NTTF, IHMR & BTL Institute of Technology; and Hospital such as Narayana Hrudayalaya, Apollo Ecity, Ramakrishna Health Care, Swami Trauma Centre & Aggarwal National Hospital.

Also within close proximity you can find various shopping malls and convenient stores.



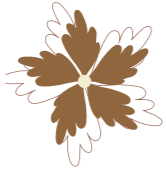
Master Plan



LEGEND

- 1. Entries with guard house
- 2. Timber pavilion
- 3. Skylight
- 4. Carved stone art work
- 5. Entry court
- 6. Kids' play area
- 7. Fitness station
- 8. Half basket ball court
- 9. Lawn
- 10. Chess board with seat all
- 11. Tennis court
- 12. Badminton court
- 13. Clubhouse
- 14. Swimming pool
- 15. C.A. area

Key Plan

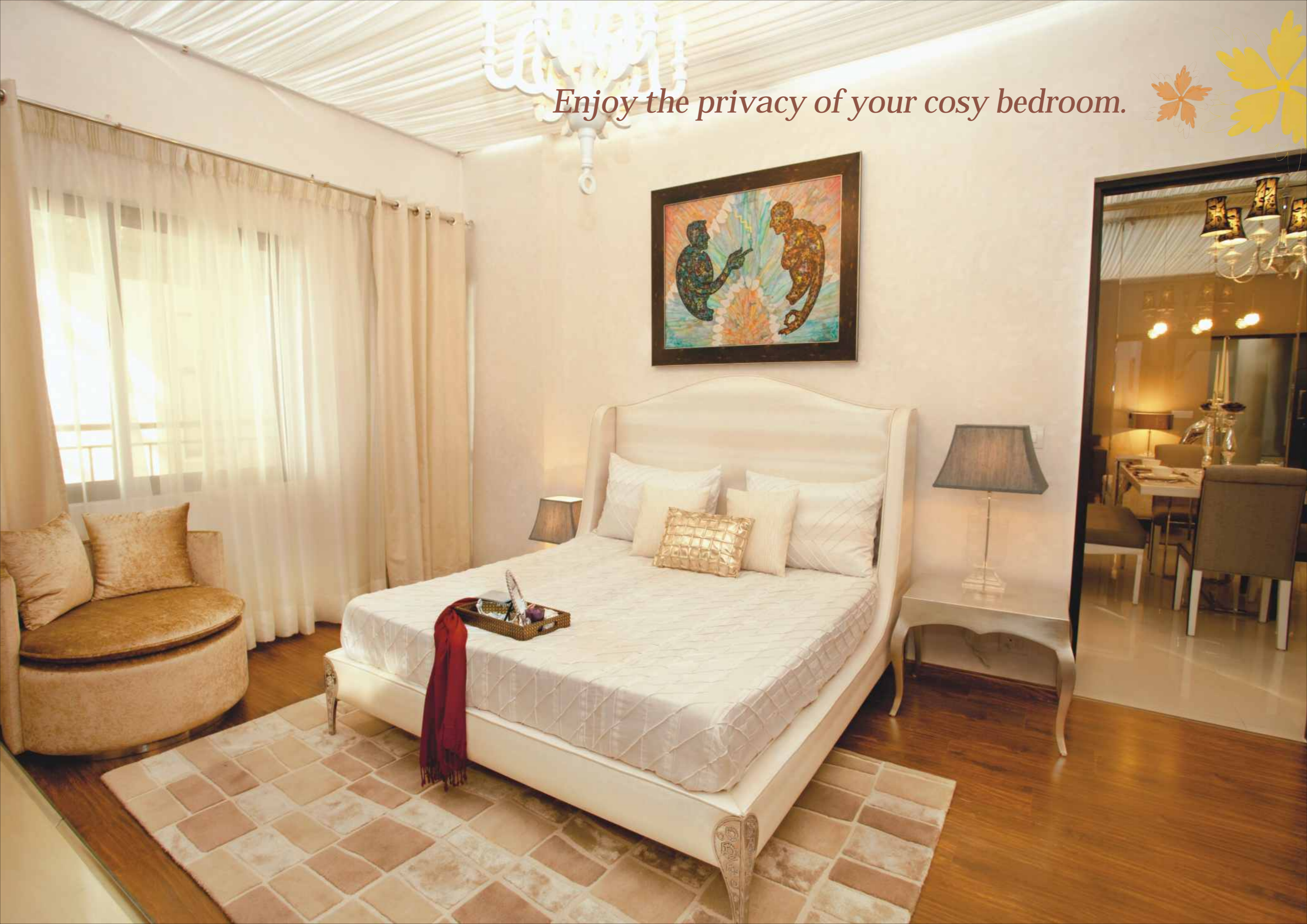


A place that offers tranquility.

Uniwold Resorts brings together inspired design and sophisticated living.



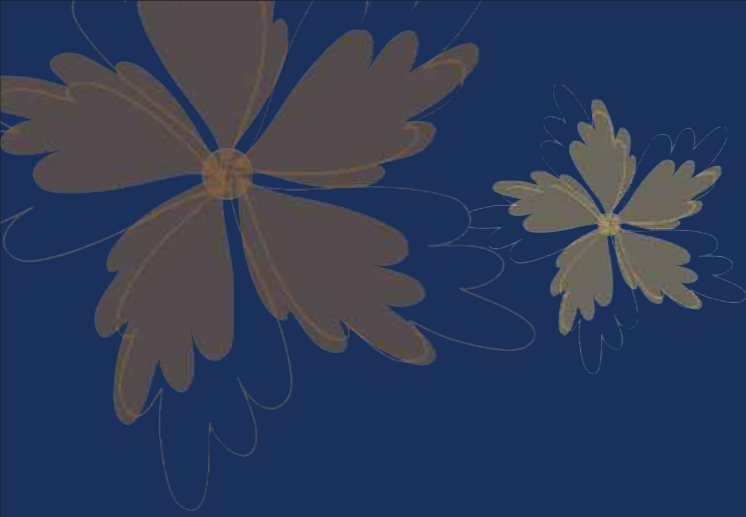
Enjoy the privacy of your cosy bedroom.







Your home - new party destination



Perspective view of Uniworld Resorts, Phase-1 & 2, Bengaluru

This is an artist's rendition, may under go modification.



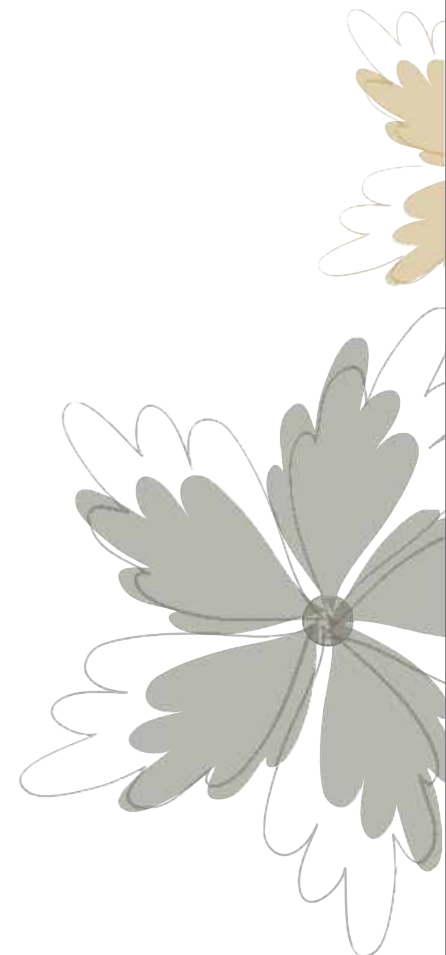
Type 1 - 3BR3T Unit

Sales Area - 1450 sq.ft.



Applicable to :
 101* & 102 - T-01 to T-21
 202, 302, & 402-T-01 to T-03, T-05 to T-08,
 T-10 to T-15, T-17, T-18, T-20 & T-21
 201*, 301* & 401* - T-01 to T-03,
 T-04 to T-07, T-09 to T-12, T-15 to T-17, T-19 & T-20

* Mirror image of the unit shown.



Type 2 - 3BR3T Unit

Sales Area - 1600 sq.ft.



Applicable to :
202 & 302-T-04, T-09, T-16 & T-19
201* & 301* - T-08, T-14, T-18 & T-21

* Mirror image of the unit shown.

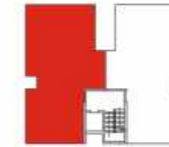


Type 3 - 3BR3T Unit



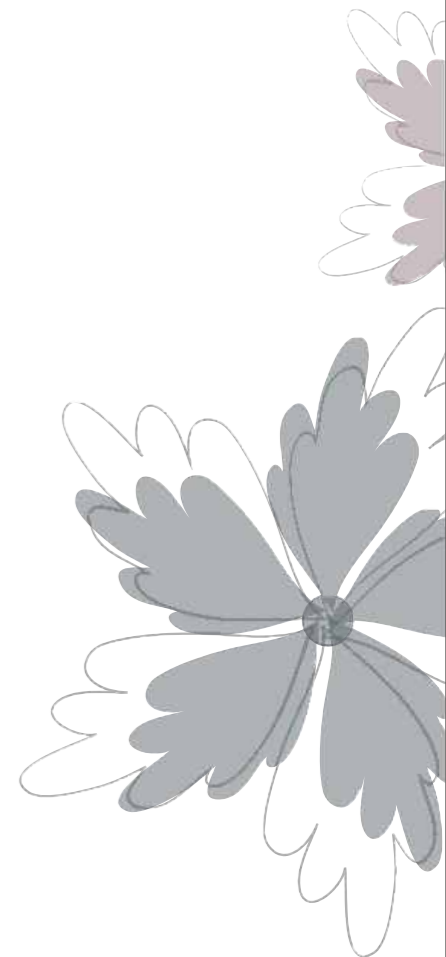
Sales Area - 1450 sq.ft.

Lawn Area - 250 sq.ft.



Applicable to :
G01* & G02 - T-01 to T-21

* Mirror image of the unit shown.



Type 4 - 3BR3T Unit



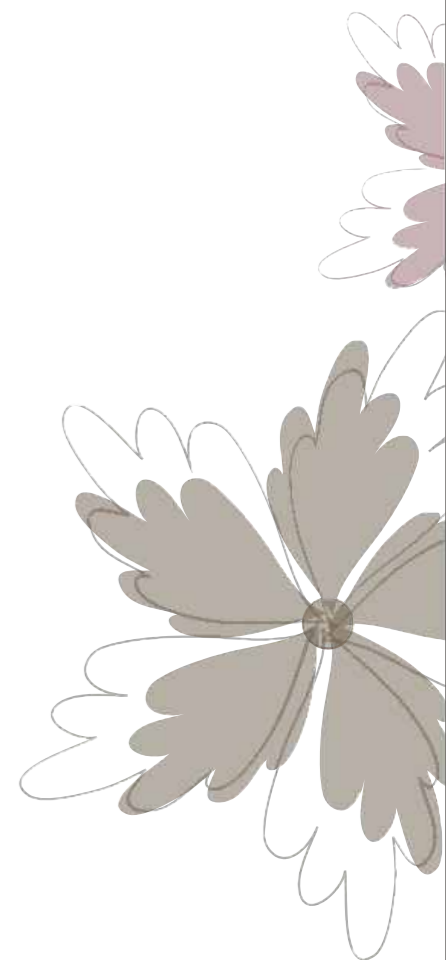
Sales Area - 1450 sq.ft.

Terrace Area - 122 sq.ft.

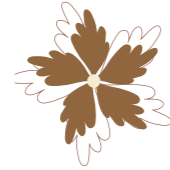


Applicable to :
402-T-04, T-09, T-16 & T-19
401* - T-08, T-14, T-18 & T-21

* Mirror image of the unit shown.



Specifications

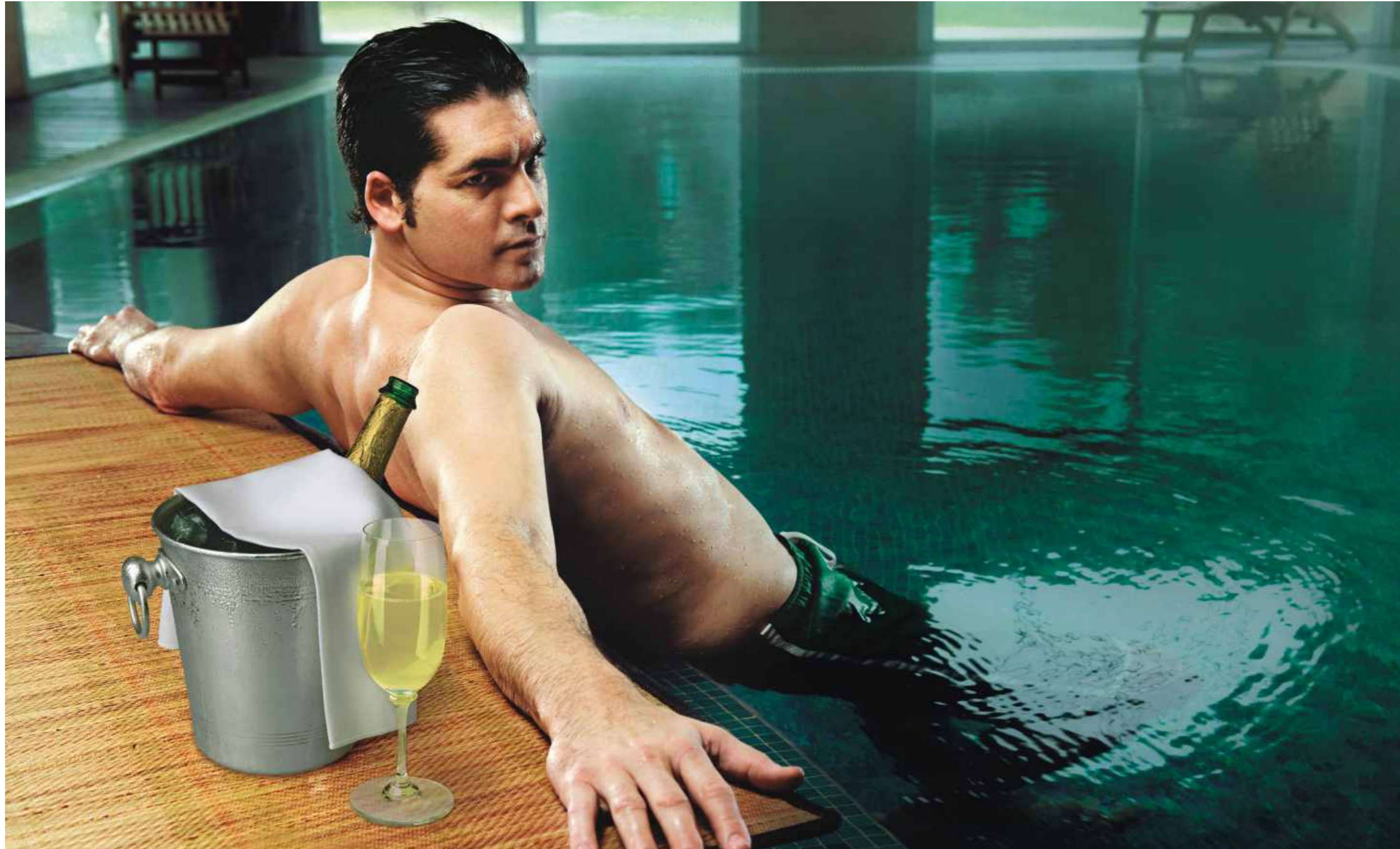


| | | |
|------------------|---|--|
| Structure | | Earthquake resistant RCC framed structure |
| Wall Finish | External Internal Ceiling | Exterior paint Plastic emulsion paint OBD |
| Flooring | Living / Dining / Bedrooms Master Bedroom Common Area / Staircase Balcony & Terraces | Vitrified tiles Laminated wooden flooring Indian Marble Vitrified anti-skid floor tiles |
| Kitchen | Flooring Dado Platform | Anti-skid vitrified tile Wall tiles up to 2' high granite cladding above work counter (limited area) Granite counter with stainless steel sink |
| Doors | External Internal Main Door | Anodized aluminum frame with glazed shutters Inside Doors: Hard Wood frame with European Style door shutters Seasoned hardwood frames with moulded European style shutters |
| Toilets | Flooring Fittings | Anti-skid tiles Branded single lever CP fitting, granite counter, pipelines for geyser |
| Windows | | Anodized / powder coated aluminum frame with glazed shutters |
| Electrical | | Provision for adequate light & power points; telephone and TV points in all bedrooms, copper wiring in concealed conduits, partial solar powered street lights |
| Power Backup | | 24 x 7 power back-up |
| Air-conditioning | | Provision for split Air-conditioning. |
| Security | | Gated community with CCTV / vigilance facility around the site, video door phone |



All floorplans, sitemap, specifications, amenities, facilities and perspective views are tentative in nature and are subject to revision





Clubhouse

- Billiards / Pool Table
- Table Tennis
- Game Rooms
- Kids Play Area
- Multi-purpose Gym
- Swimming Pool with Changing Room
- Tennis Court
- Badminton Court
- Basket Ball Court

