



CONSTRUCTION UPDATE - May 2015

Dear Customer,

Greetings!

We would like to keep you up to date with what's happening in and around your privileged Unitech property.



Landscape
View of the landscape
between Tower 6 & 7

Internal Roads
Road in front of Tower 6-8





Internal Roads

View of the road behind Tower 8

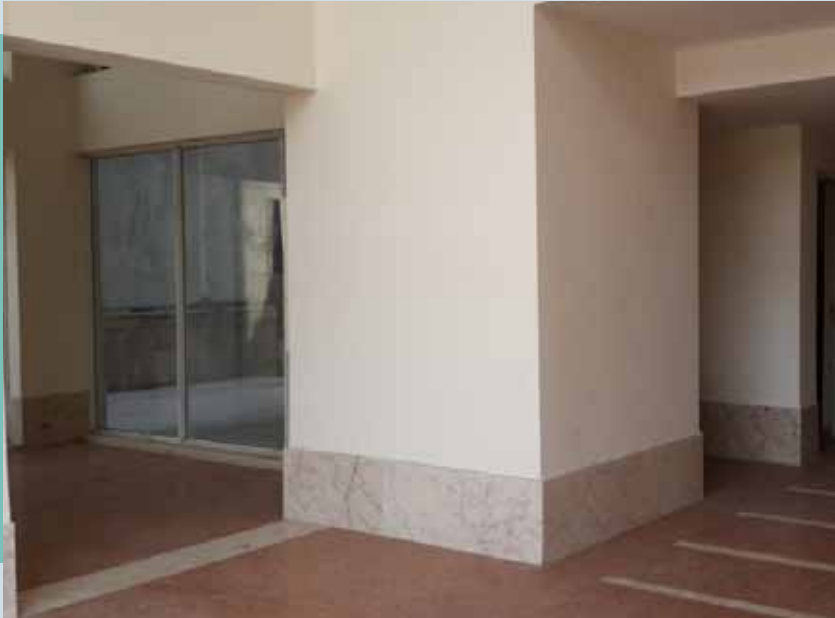
Tower 6

View of the lobby



Tower 6

Next tower to be released for possession



Tower 7
View of the lobby



Tower 7
Signage installed in front of Tower 7

S. No.	PARTICULARS	TOWER																									
		1			2			3			4			5			6			7			8				
	STRUCTURAL COMPLETION	1 (G+18)	3 (G+15)	2 (G+17)	1 (G+17)	3 (G+15)	2 (G+17)	1 (G+18)	3 (G+15)	2 (G+17)	1 (G+17)	3 (G+15)	2 (G+17)	1 (G+17)	3 (G+15)	2 (G+18)	1 (G+18)	3 (G+15)	2 (G+17)	1 (G+17)	3 (G+15)	2 (G+17)	1 (G+17)	3 (G+15)	2 (G+18)		
1	Excavation	Completed																									
2	Completion of foundation	Completed																									
3	Completion of ground floor roof	Completed																									
4	Completion of 1st floor roof	Completed																									
5	Completion of typical floor roof	Completed																									
6	Completion of top floor roof	Completed																									
7	Completion of masonry work within flat	Completed																									
8	Completion of internal plaster within flat	Completed																					14th	14th	14th		
9	Completion of plumbing work within flat	Completed																					4th	4th	4th		
10	Aluminum work (frames)	Completed																		C		14		2			
11	Aluminum work (Shutters)	Completed																		-		-		-			
12	Completion of electrical wiring within flat	15	15	15	Completed																		-	-	-	-	-
13	Completion of flooring within flat	Completed																					16th	15th	16th		

C- Completed

For further queries
please call us at -
0124-4552103