

— unitech —
Wildflower Country





— unitech —

Wildflower Country

Let the morning mist unearth mystic nature

Welcome to 100 acres of tranquility at Wildflower Country - a sprawling leafy self contained township. Share the best things in life with your loved ones. The township offers world class amenities for the modern aficionados.

Come and rediscover blissful living.



Location Map

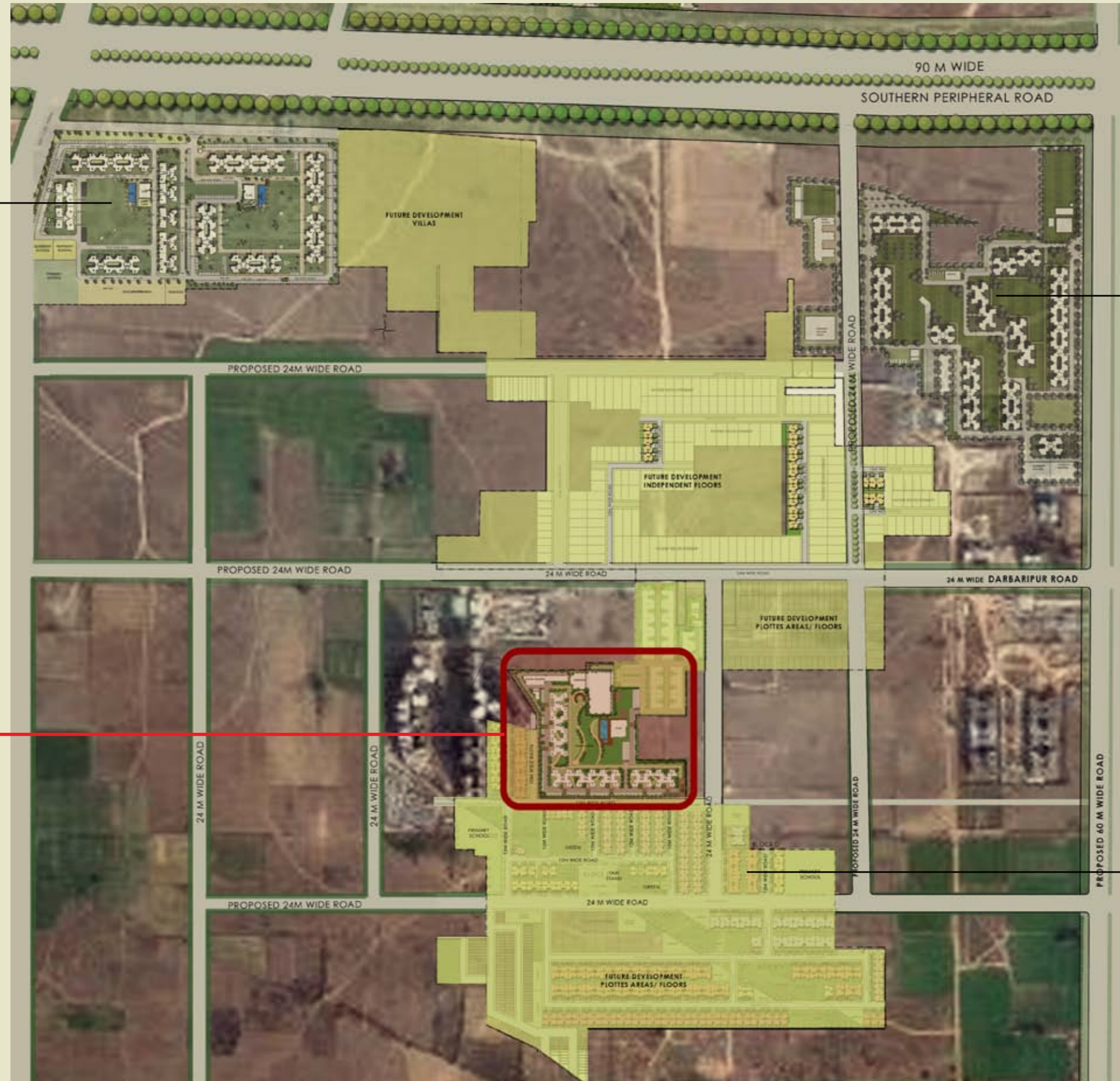
- Adjacent to 90 m wide Southern Periphery Road, just 3.5 kms from NH-8
- 2 kms from occupied residential areas, offices & shopping malls on Sohna road & Golf Course Extension road
- Within 15 mins. drive are leading schools such as DPS, The Heritage, Shikshantar, GD Goenka & Pathways
- Within 15 mins. drive are leading hospitals such as Medicity, Artemis, Max, Fortis & Paras



unitech
Crestview Apartments



Master Plan



— unitech —
VISTAS

— unitech —
south park

— unitech —
Crestview Apartments

— unitech —
Anthea Floors



— **unitech** —
Crestview Apartments



Day view



This is an artist's rendition and may undergo modifications.



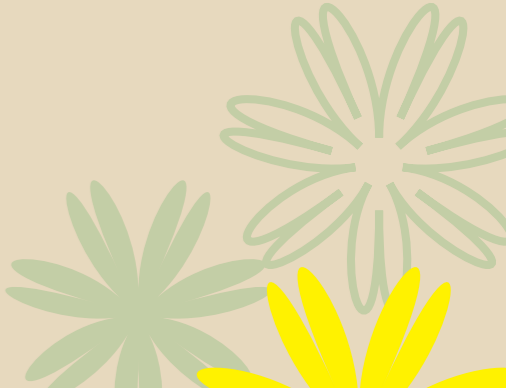


This is an artist's rendition and may undergo modifications.

Evening view



Key Plan



Features

Infrastructure essentials

- Power backup
- Fire alarm system
- Provision for piped gas

Landscape / Sports

- Cricket pitch
- Squash court
- Badminton court
- Themed garden/ yoga garden
- Kids play area
- Jogging track

Security

- Smart card access at main entrance and basement
- Automatic boom barriers at main entry and exit
- CCTV surveillance of main entrance & tower entrance
- Audio communication from guard unit to each apartment

Ecological commitments

- Sewage treatment
- Rain water harvesting
- Solar energy for limited areas



Club

Swimming pool

Kid's splash pool

Changing rooms

Unisex gymnasium

Multipurpose hall

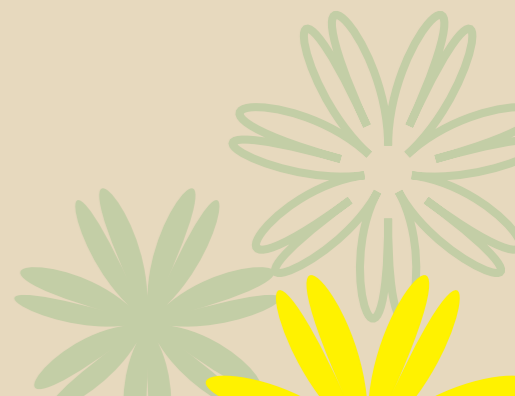
Party lawn with barbeque counter and outdoor music

Pool side party area

Indoor games room with pool / billiards table & air hockey

Table tennis

Kitchenette



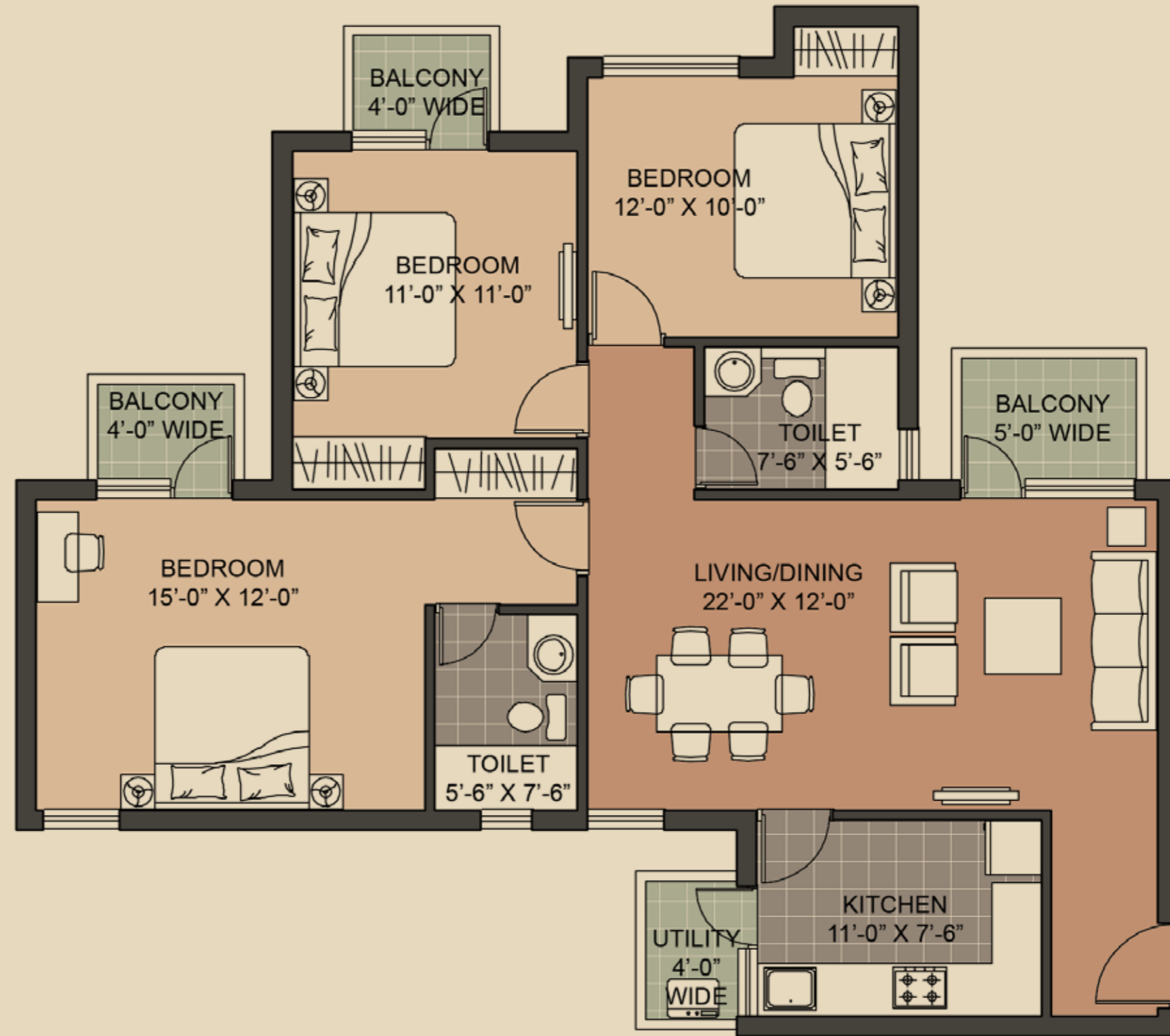
Specifications

Structure		Earthquake resistant RCC framed structure
Wall Finish	External	Exterior paint
	Internal	Plastic emulsion paint, ceiling in OBD
	Lift lobby	Combination of stone & paint
Flooring	Living / Dining	Imported marble
	Bedrooms	Laminated wooden flooring
	Balconies	Anti-skid tiles
	Common areas & staircase	Stone / marble
	Lift lobby	Stone / vitrified tiles
Kitchen	Flooring	Anti-skid tiles
	Dado	Ceramic tiles upto 600 mm above counter
	Counter	Stone counter with stainless steel sink with drain board
Toilets	Flooring	Anti-skid tiles
	Dado	Select ceramic tiles upto ceiling
	Fittings	EWC & wash basin in white colour, single lever CP fittings, stone counter, pipelines for geyser
Doors	Main Entry / Internal	Seasoned hardwood frames with moulded European style shutters
	External	Anodized / powder coated glazed aluminium / UPVC doors
Windows		Anodized / powder coated glazed aluminium / UPVC windows
Electrical		Three phase supply with independent meter, copper wiring in concealed conduits; modular switches
Air-conditioning		Split AC units in all bedrooms & living/dining room
Power back-up		100% Power backup
Communication		One telephone jack each in the living room and all bedrooms, intercom facility to each flat in the living room
Television		TV point in the living room and all bedrooms
Lift		One passenger and one service lift to each tower



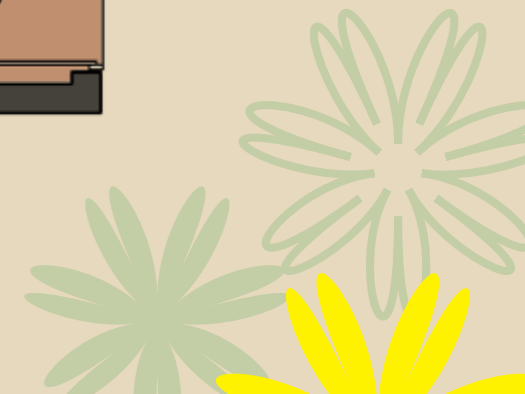
Type X1

3BR + 2T (1402 sq. ft.)



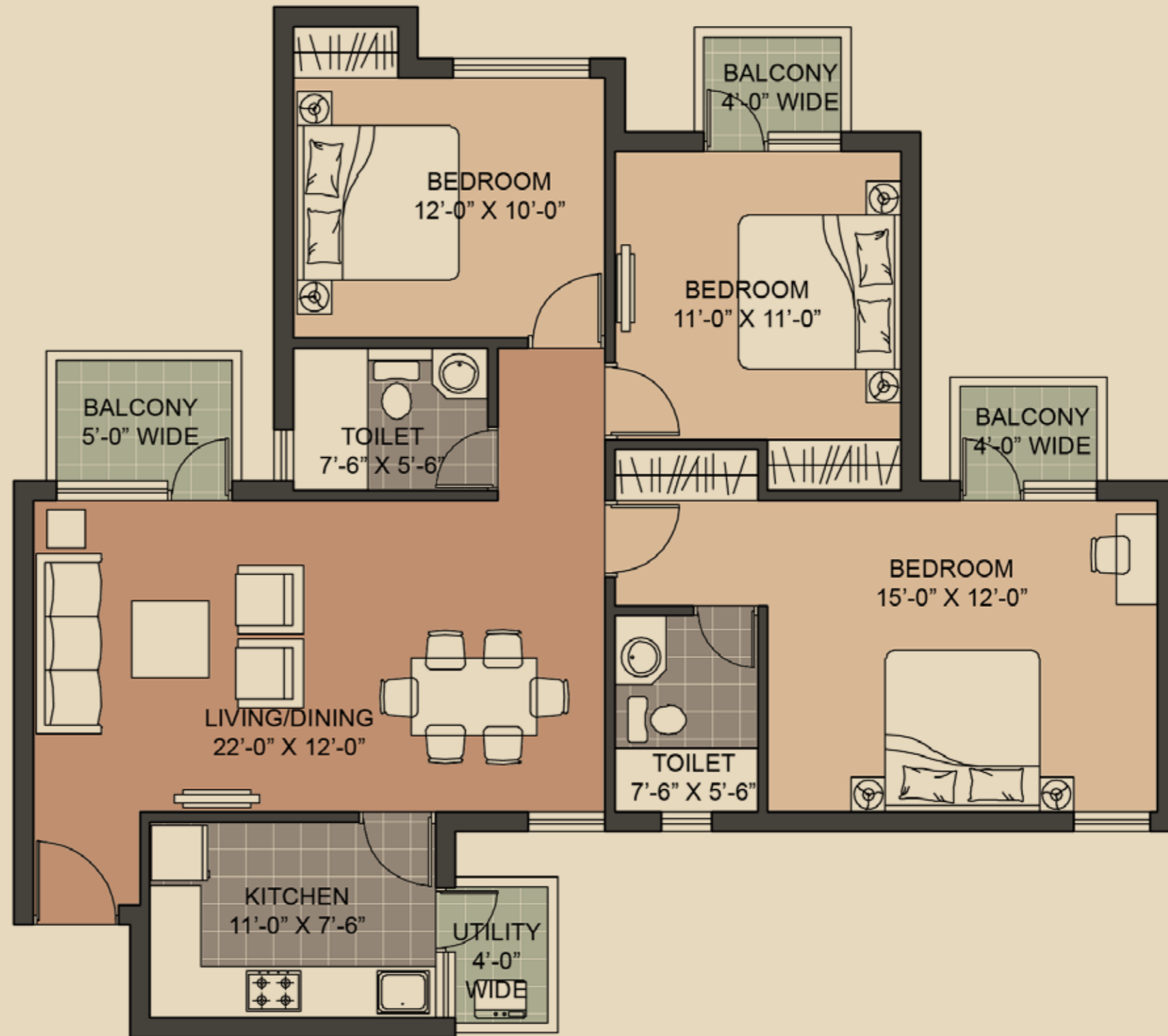
A1, A2, A3, A4, A5 = G01-1401; 102*-1402*

Notes:
* Indicates mirror images
Floor no. 13 does not exist



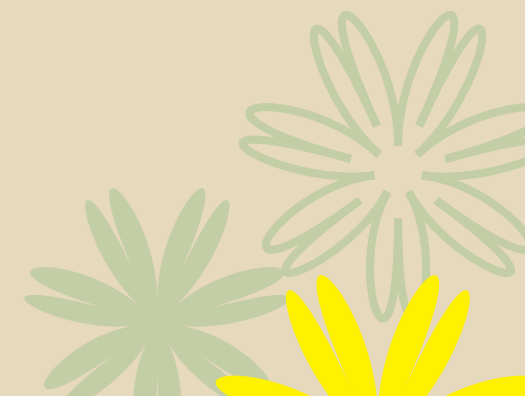
Type X2

3BR + 2T (1390 sq. ft.)



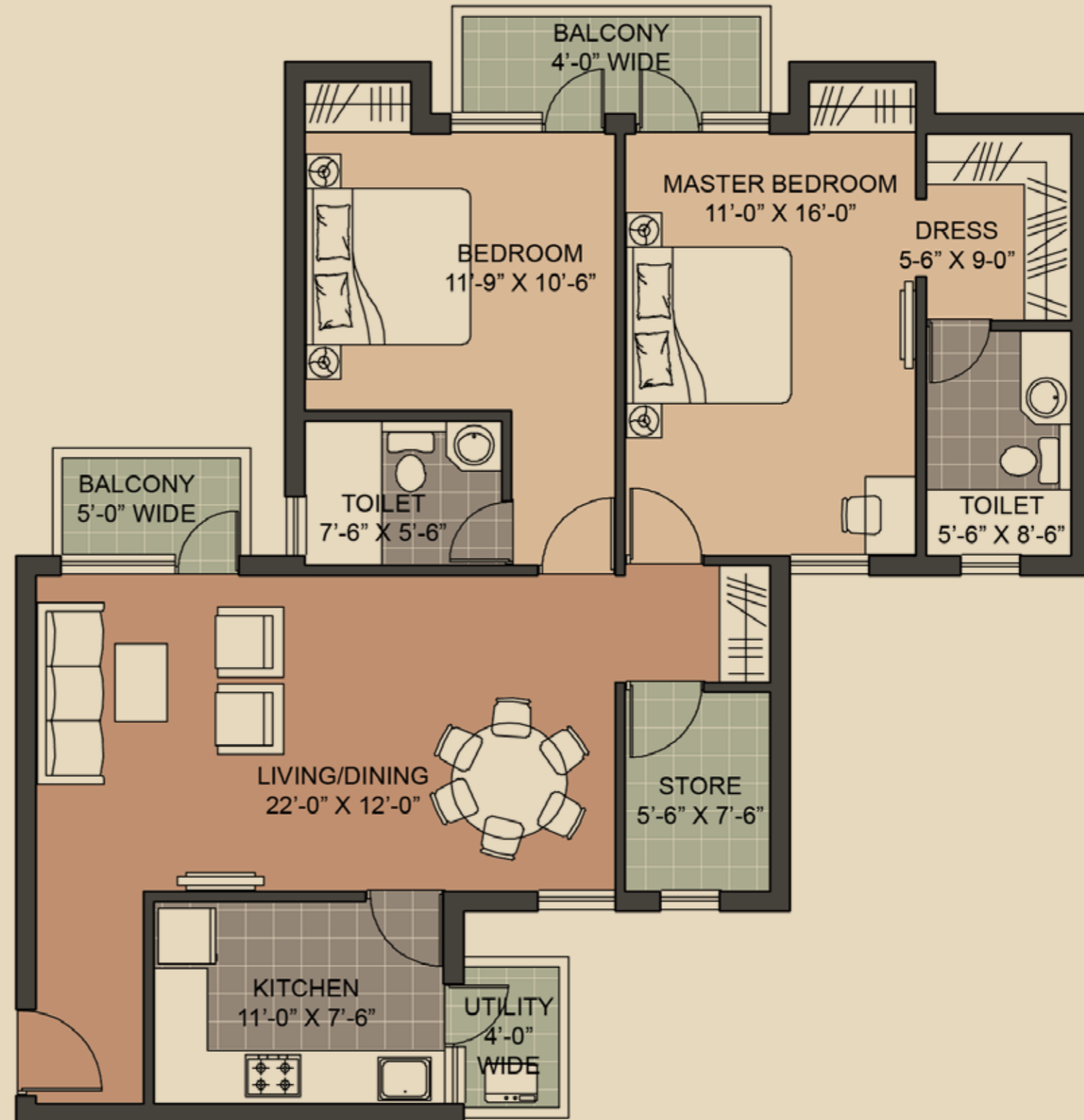
A1, A2, A3, A4, A5 = G02

Notes:
* Indicates mirror images
Floor no. 13 does not exist



Type Y1

2BR + 2T + Store (1357 sq. ft.)



B1 = 201*-301*; 204*-304*

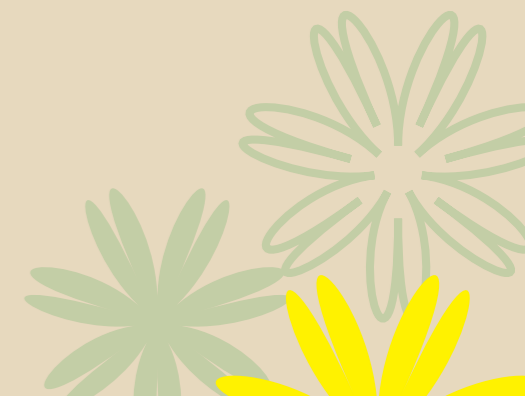
B2 = 201*-301*; 202-302; 203*-303*; 204*-304*

B3 = 202-302; 203*-303*

Notes:

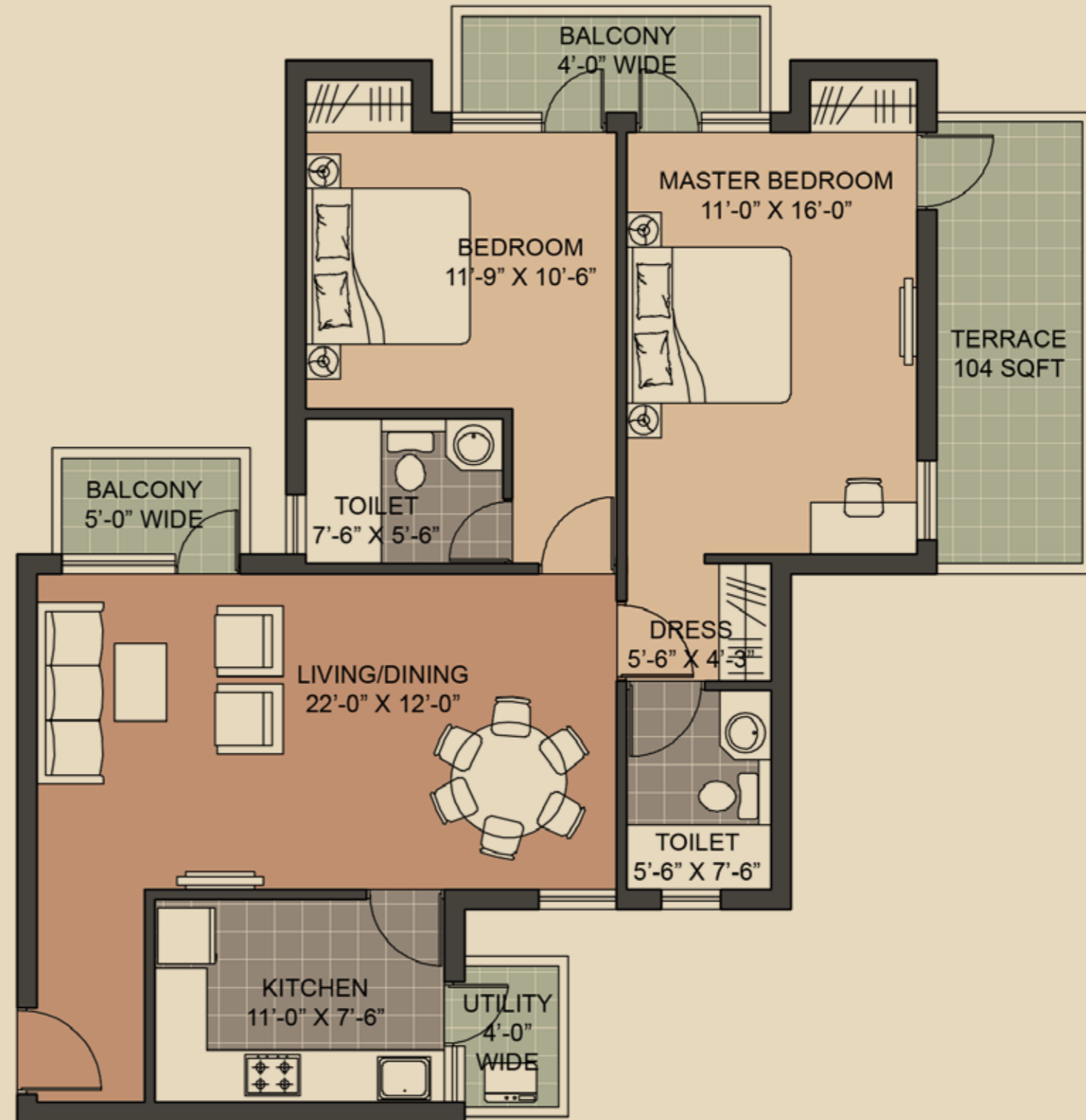
* Indicates mirror images

Floor no. 13 does not exist



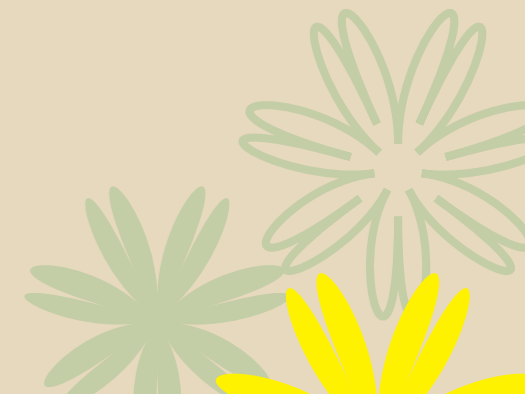
Type Y2

2BR + 2T (1254 sq. ft.); Terrace (104 sq. ft.)



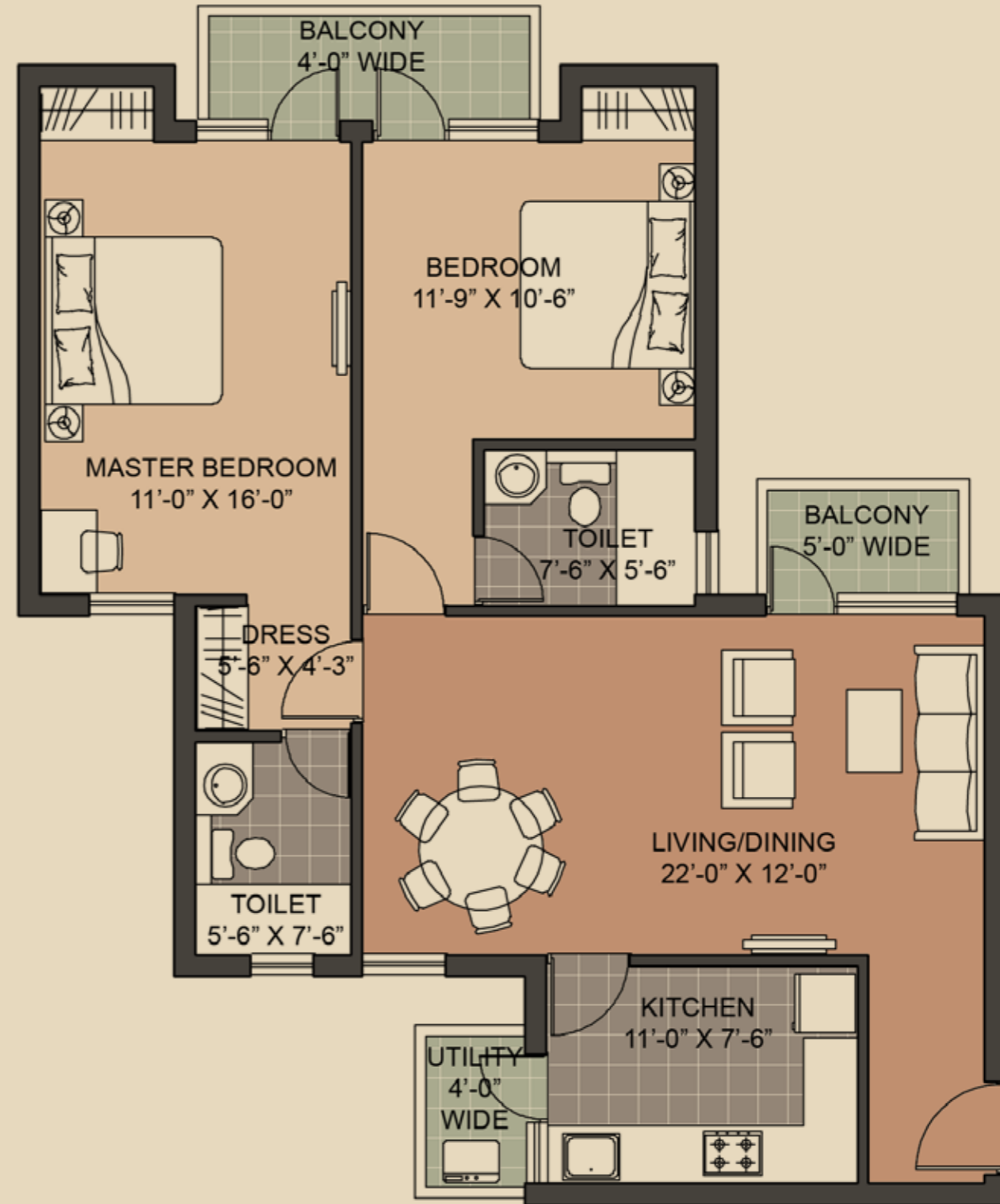
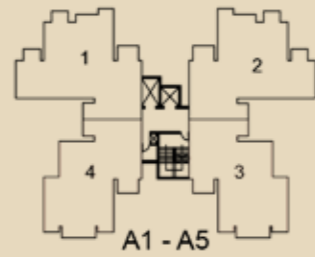
- B1 = 401*; 404*
- B2 = 401*; 402, 403*; 404*
- B3 = 402; 403*

Notes:
* Indicates mirror images
Floor no. 13 does not exist



Type Y3

2BR + 2T (1254 sq. ft.)



A1, A2, A3, A4, A5 = 203*-1403*; G04*-1404*

B1 = G01-101; 102*-1402*; 203*-1403*; G04*-104*; *504*-1404*; 501-1401

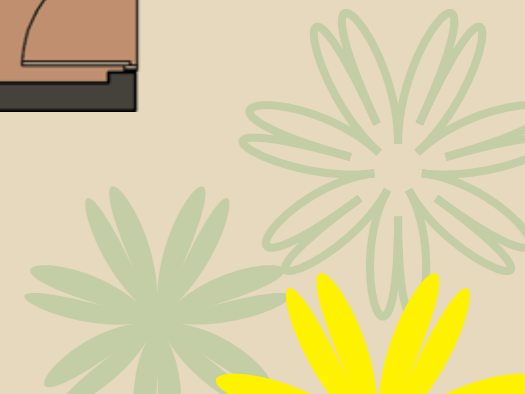
B2 = G01-101; 102*; 501-1401; 502*-1402*; 503*-1403*; G04*-104*; 504*-1404*

B3 = G01-1401; 102*; 502*-1402*; G04*-1404*; 503*-1403*

Notes:

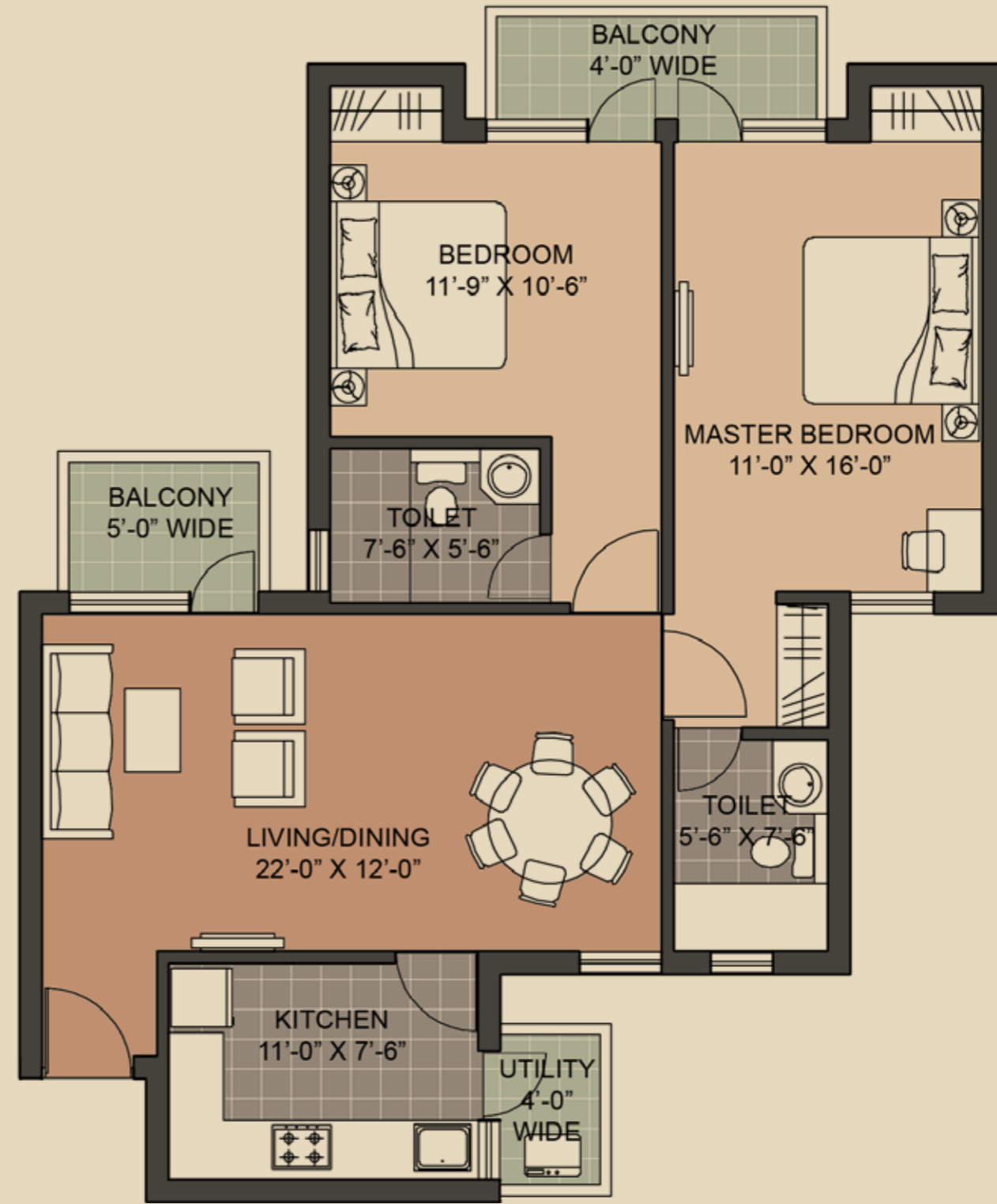
* Indicates mirror images

Floor no. 13 does not exist



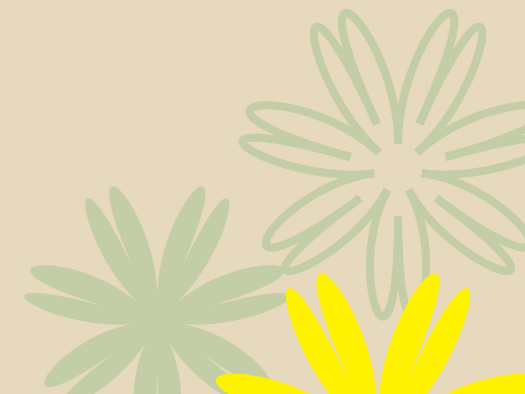
Type Y4

2BR + 2T (1242 sq. ft.)



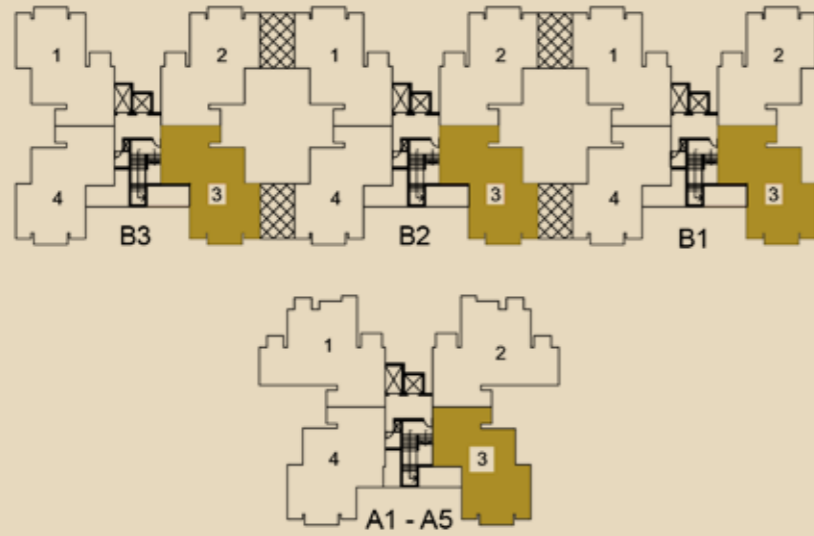
B1, B2, B3 = G02

Notes:
* Indicates mirror images
Floor no. 13 does not exist



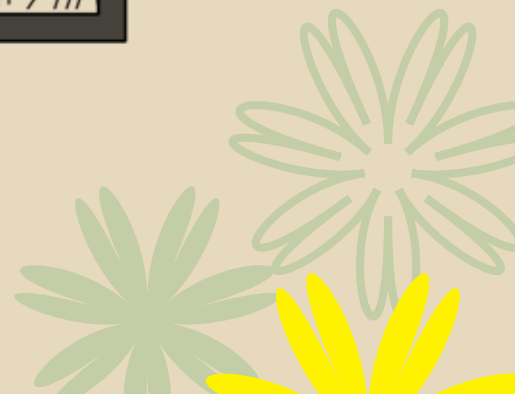
Type Y5

2BR + 2T (1216 sq. ft.)



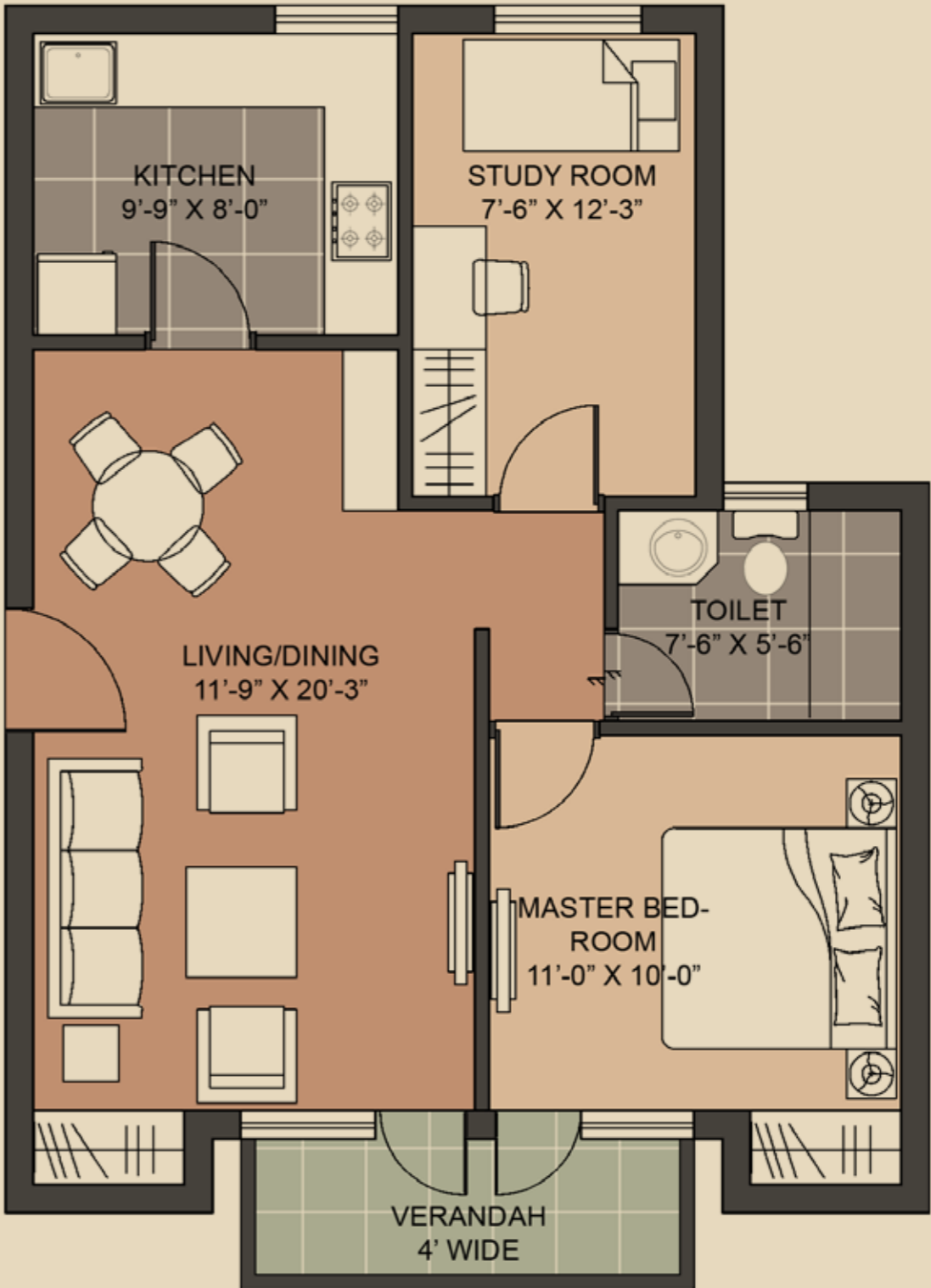
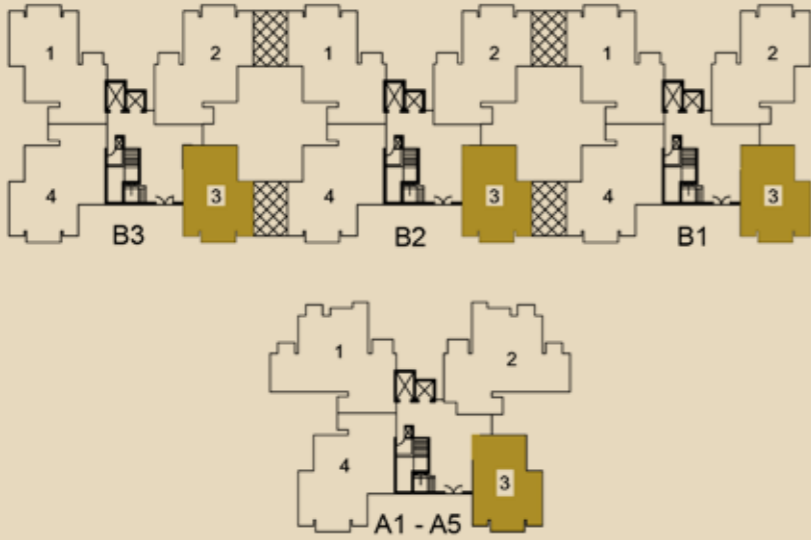
A1, A2, A3, A4, A5 = 103
B1, B2, B3 = 103

Notes:
* Indicates mirror images
Floor no. 13 does not exist



Type Z1

1BR + Study + 1T (925 sq. ft.)



A1, A2, A3, A4, A5 = G03
 B1, B2, B3 = G03

Notes:
 * Indicates mirror images
 Floor no. 13 does not exist

