



Bengal Universal Consultants Pvt. Ltd. Welcome's Guests to the World of Modern Commercial Office & Retail-"The Chambers". An Integrated complex to meet every needs of the Corporate Office Environment & Retail Business.

**THE CHAMBERS**  
R B CONNECTOR



Complex Address: The Chambers, Kasba, Premises no. 1865, Rajdanga Main Road, Kolkata-700107

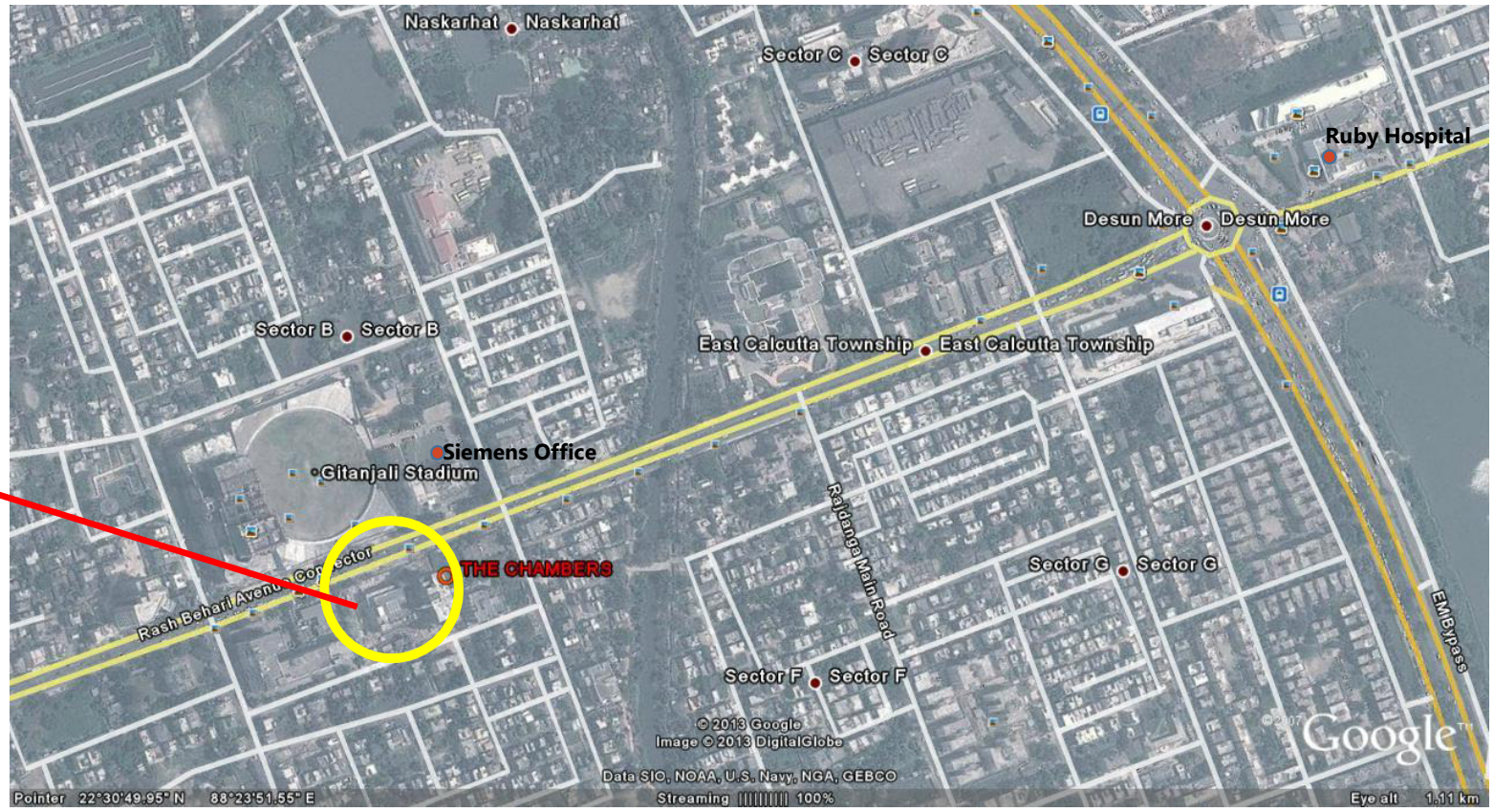
Registered Office Address: Unitech Signature Towers, Level- 1, South City-1, NH—8, Gurgaon- 122001 Ph: +91 124 4552000

Regional Office Address: Bengal Universal Consultants Pvt. Ltd., 22 Camac Street, Block C, 4<sup>th</sup> Floor, Kolkata-700016, Ph: +91 33 2289200

Web Address: [www.unitechgroup.com](http://www.unitechgroup.com)

For Enquiry: +91-9903974742, +91-9830139235, +91-9903043487

# "The Chambers" – Aerial Location Map



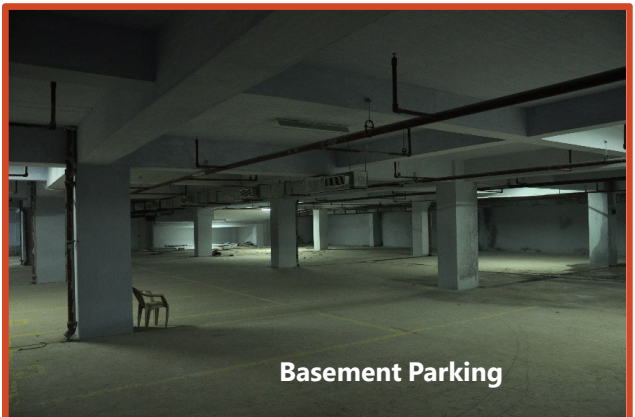
# "The Chambers"-Actual Photographs



**Main Elevation**



**Office Passage**



**Basement Parking**



**Escalators**



**Internal Passages  
Retail (Left) & Office (Right)**



**Atrium**

# “The Chambers” – Project Highlights

- An Integrated commercial complex, comprising of Office Units and Retail Units and is offering an excellent opportunity with a mix of cutting edge design, neo-age architecture.
- Optimum space utilization.
- Ample circulation areas in the complex for the guests visiting the complex.
- Double level basement, parking along with adequate surface parking.
- Building ready with Completion Certificate from the Governing Authorities.
- Possession of the Units Started.
- Axis Bank already operational.
- Prominent brands showing considerable interests.



Axis Bank Operational

# “The Chambers” – Project Amenities

- 100% Power back up for a smooth & uninterrupted Office and Retail experience.
- Centralized air conditioned Retail Block.
- Ground and First Floor offices air conditioned.
- High speed Mitsubishi & Schindler Elevators & Mitsubishi Escalators.
- BMS System monitored complex
- Modern Firefighting system in place
- Common Toilet Facilities in each floor of Retail and Office Block
- 24\*7 security monitored Complex
- CCTV monitored Complex
- Ample Advertising Options

# "The Chambers"- Ground Floor Plan

(Office Section: Ground +8 Floors; Retail Section: Ground +2 Floors)

(Office Section)

(Retail Section)



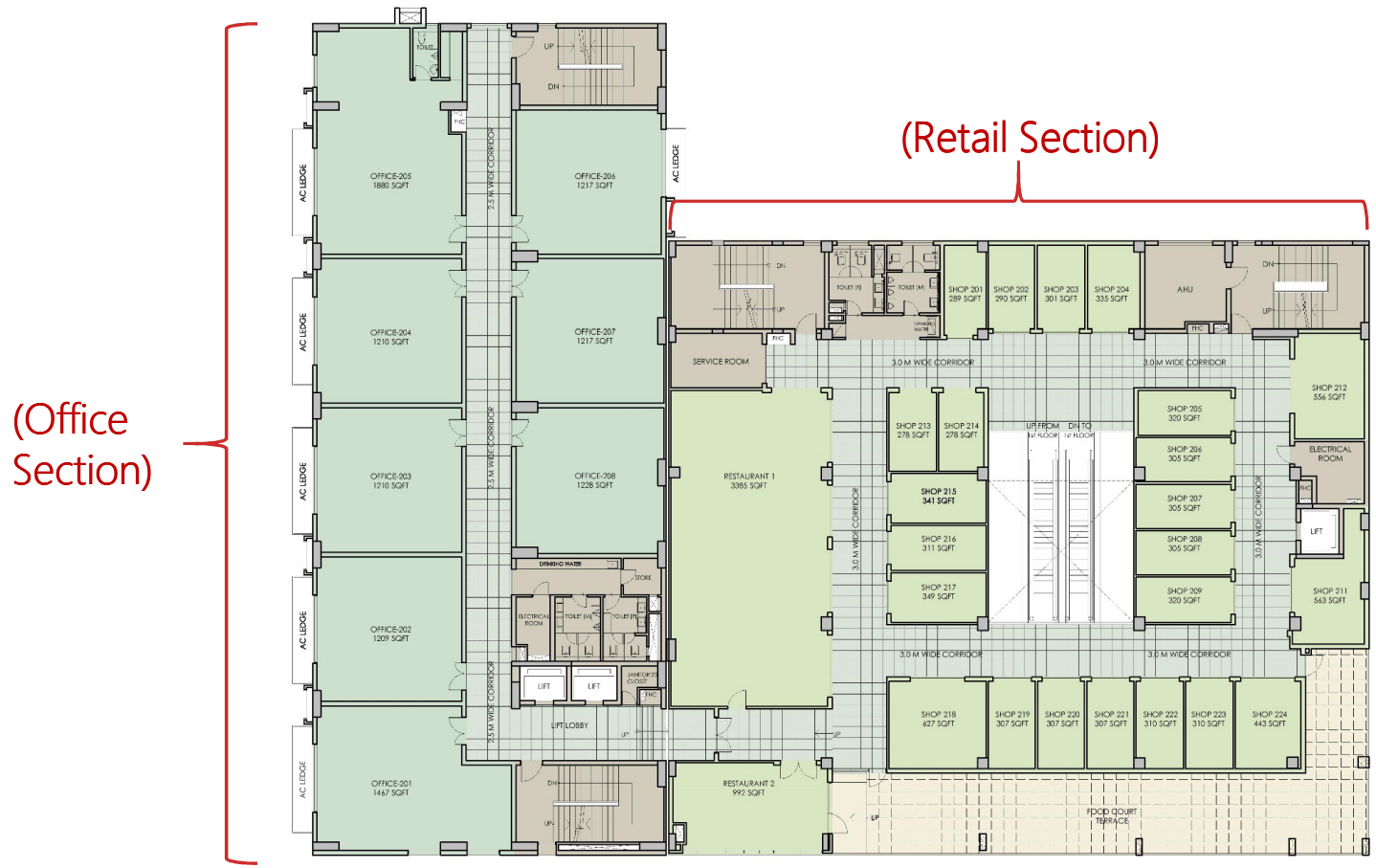
# "The Chambers"- First Floor Plan (Office Section: Ground +8 Floors; Retail Section: Ground +2 Floors)

(Office Section)

(Retail Section)



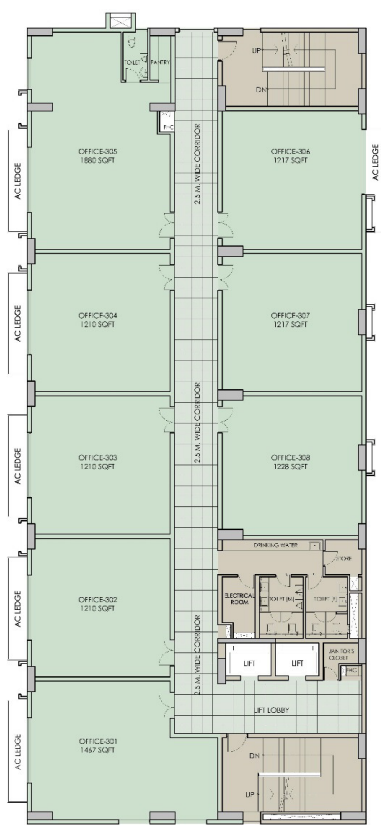
# "The Chambers"- Second Floor Plan (Office Section: Ground +8 Floors; Retail Section: Ground +2 Floors)



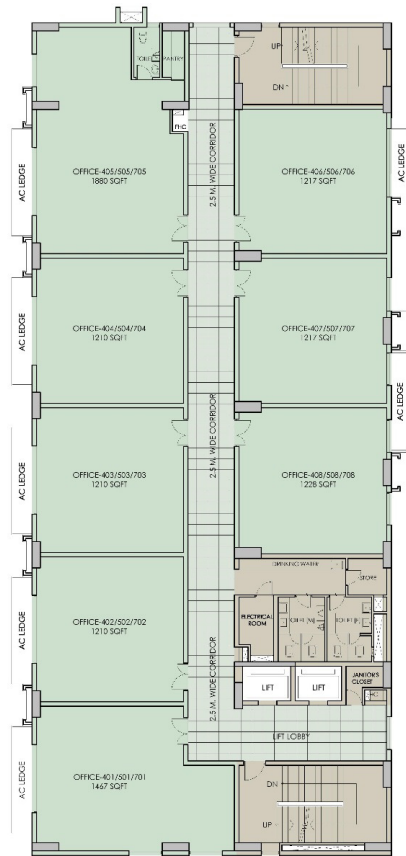


# "The Chambers"- Third Floor to Eighth Floor Plan (Office Section: Ground +8 Floors)

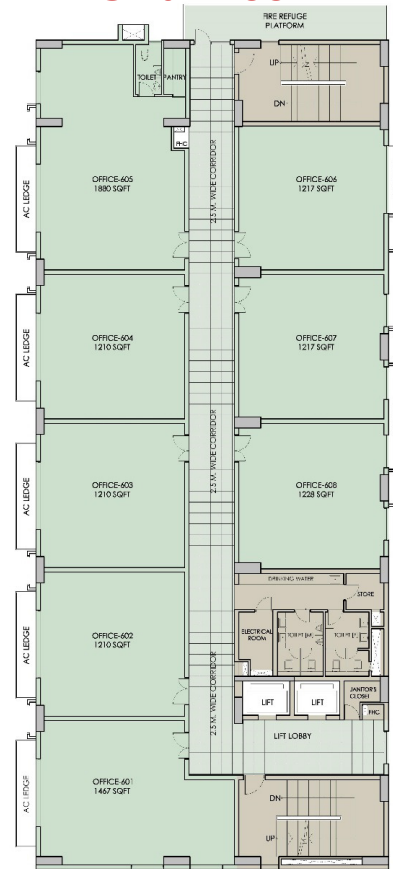
### Third Floor



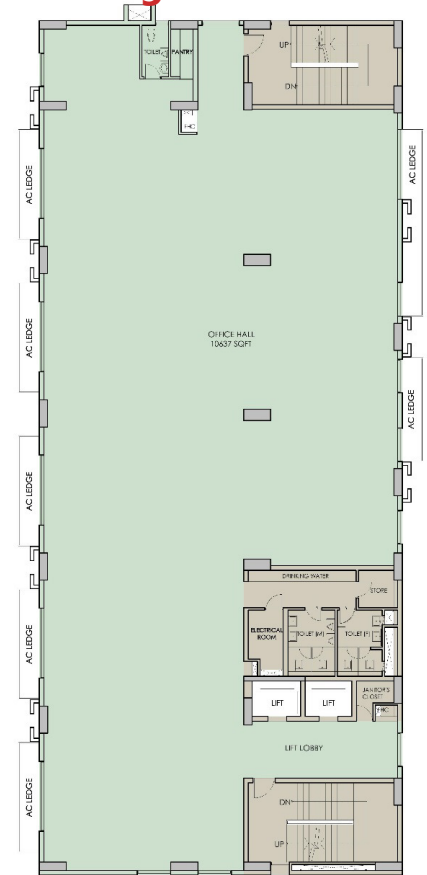
### Fourth, Fifth & Seventh Floor



### Sixth Floor



### Eighth Floor



# "The Chambers" – Detailed Specifications

## Structure

- Walls - earthquake resistant RCC framed construction with infill brick wall

## Wall Finish

### Internal

- Entrance Lobby - Paint
- Lift Lobby & Corridor - Stone cladding and Paint.
- Office - Cement Plastering

### External

- Combination of stone & textured paint finish

## Flooring

- Entrance Lobby - Vitrified Tiles
- Lift Lobby - Vitrified Tiles
- Shop/ Office corridor - Vitrified Tiles
- Office - Bare shell slab
- Staircase - Polished Kota Stone

## Common Toilets

- Walls - Ceramic Tiles up to false ceiling level
- Flooring - Vitrified Tiles
- Fittings - Marble/ Granite counter, white sanitary fixtures & CP fittings

## Windows

- Powder coated/ anodized aluminium glazing

## False Ceiling

- Entrance lobby, Lift lobby, Shop Corridor, Office Corridor & Toilets

## Air Conditioning

- Shop - High-side up to AHU/FCU/CSU to be done by developers  
Low-side to be done by end users
- Shop Corridor & Atrium - Centrally air conditioned
- Office (Ground and first floor)-High-side up to AHU/FCU/CSU to be done by developers  
Low-side to be done by end users
- Office Corridor (Ground and first floor), Reception area-Centrally air conditioned

## Amenities

- Power back up

*Note: All buildings, layouts, specifications, etc are tentative and subject to variation & modification by the company or the competent authorities sanctioning such plans*

Thank You