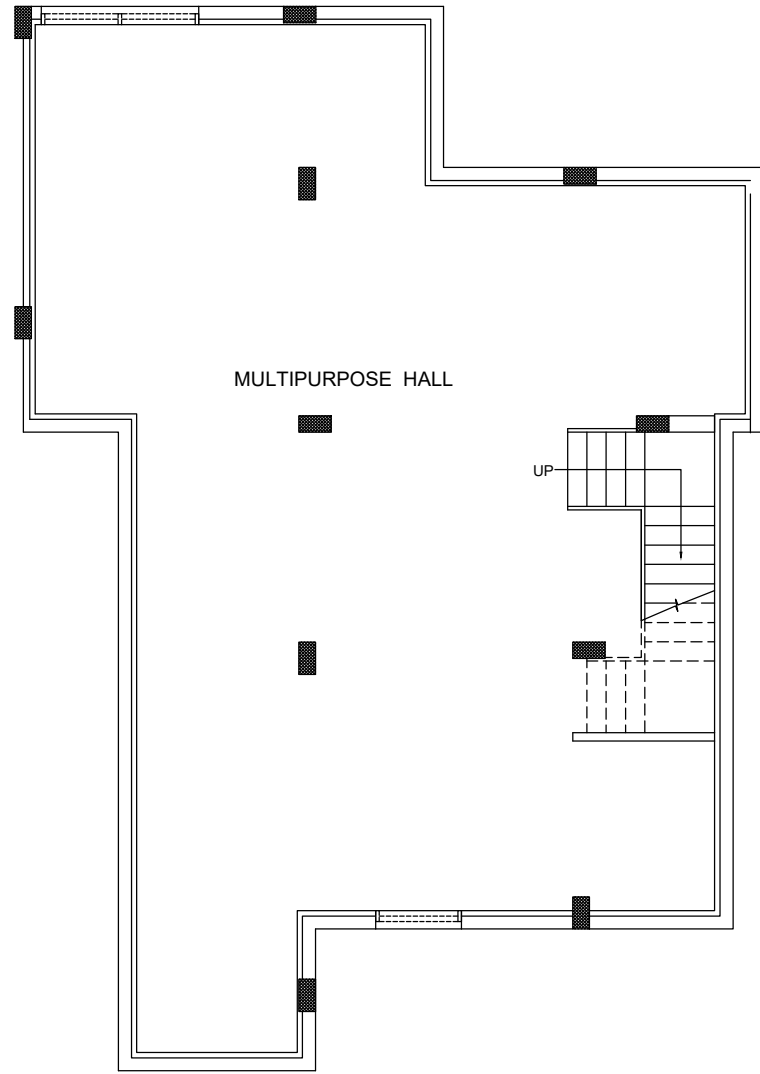
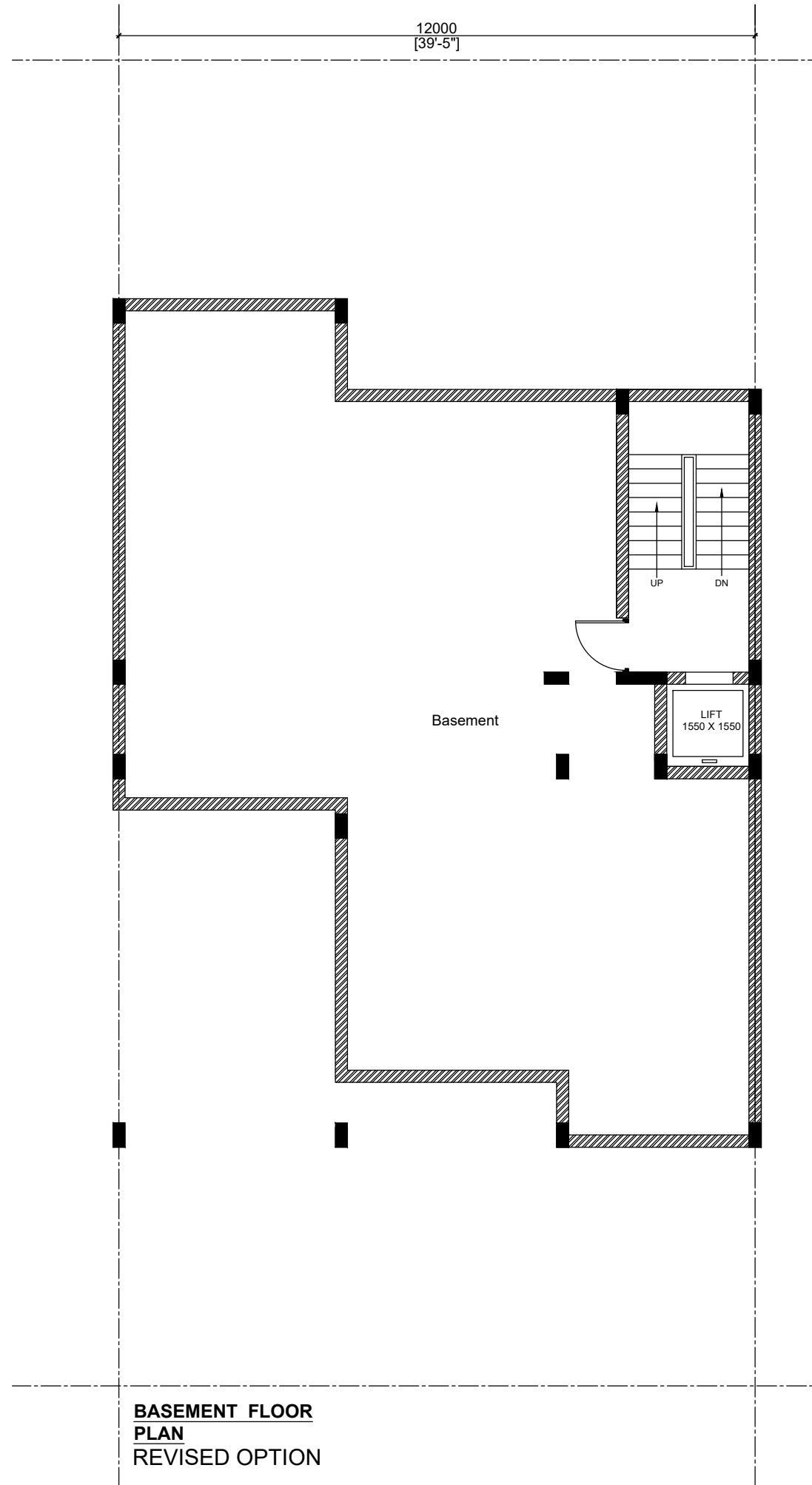


**TYPE C (300 SQM / 358.80 SQYDS)  
WITH PURCHASABLE FAR**



**BASEMENT FLOOR PLAN  
ORIGINAL OPTION**

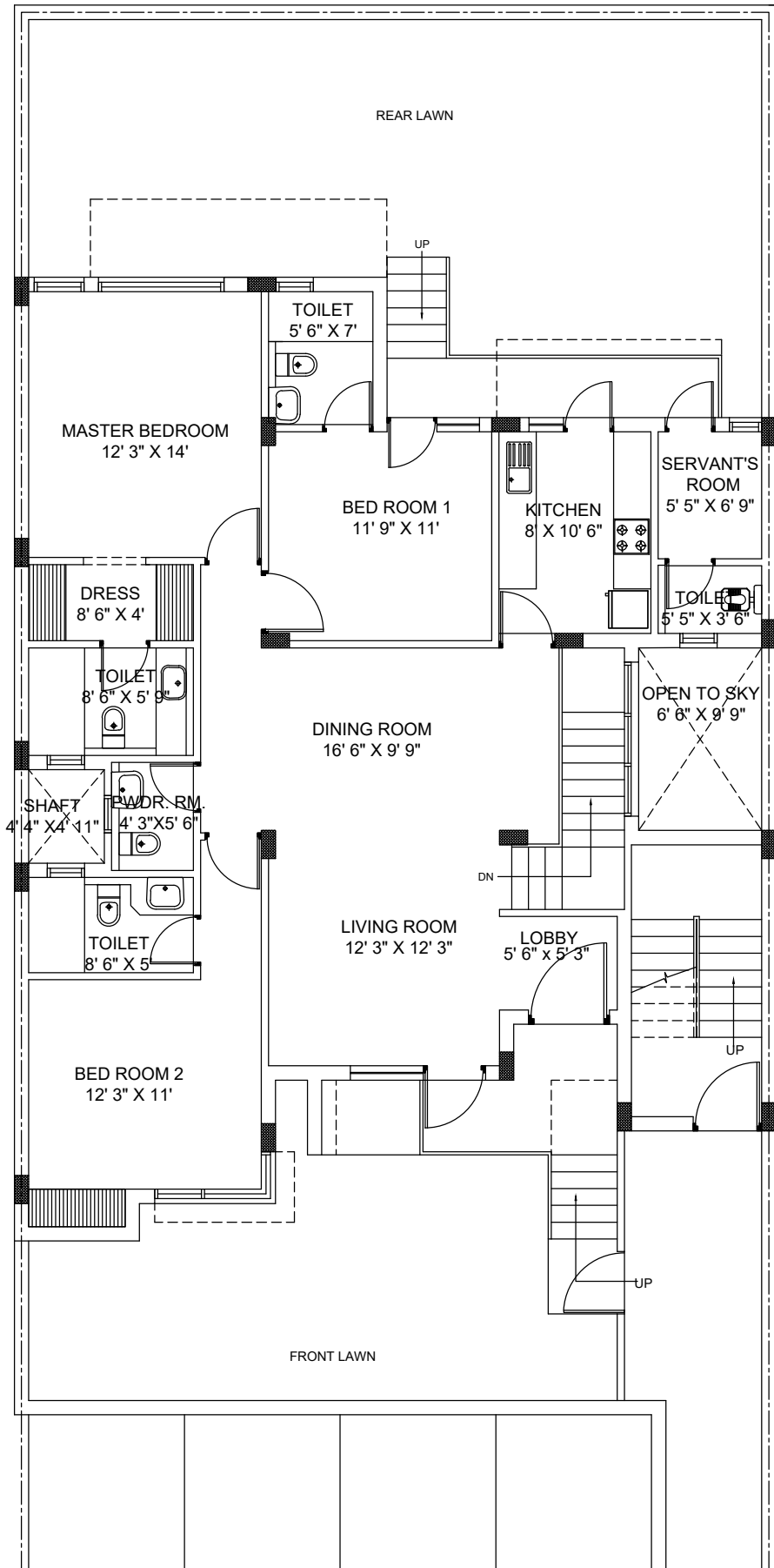


**BASEMENT FLOOR  
PLAN  
REVISED OPTION**

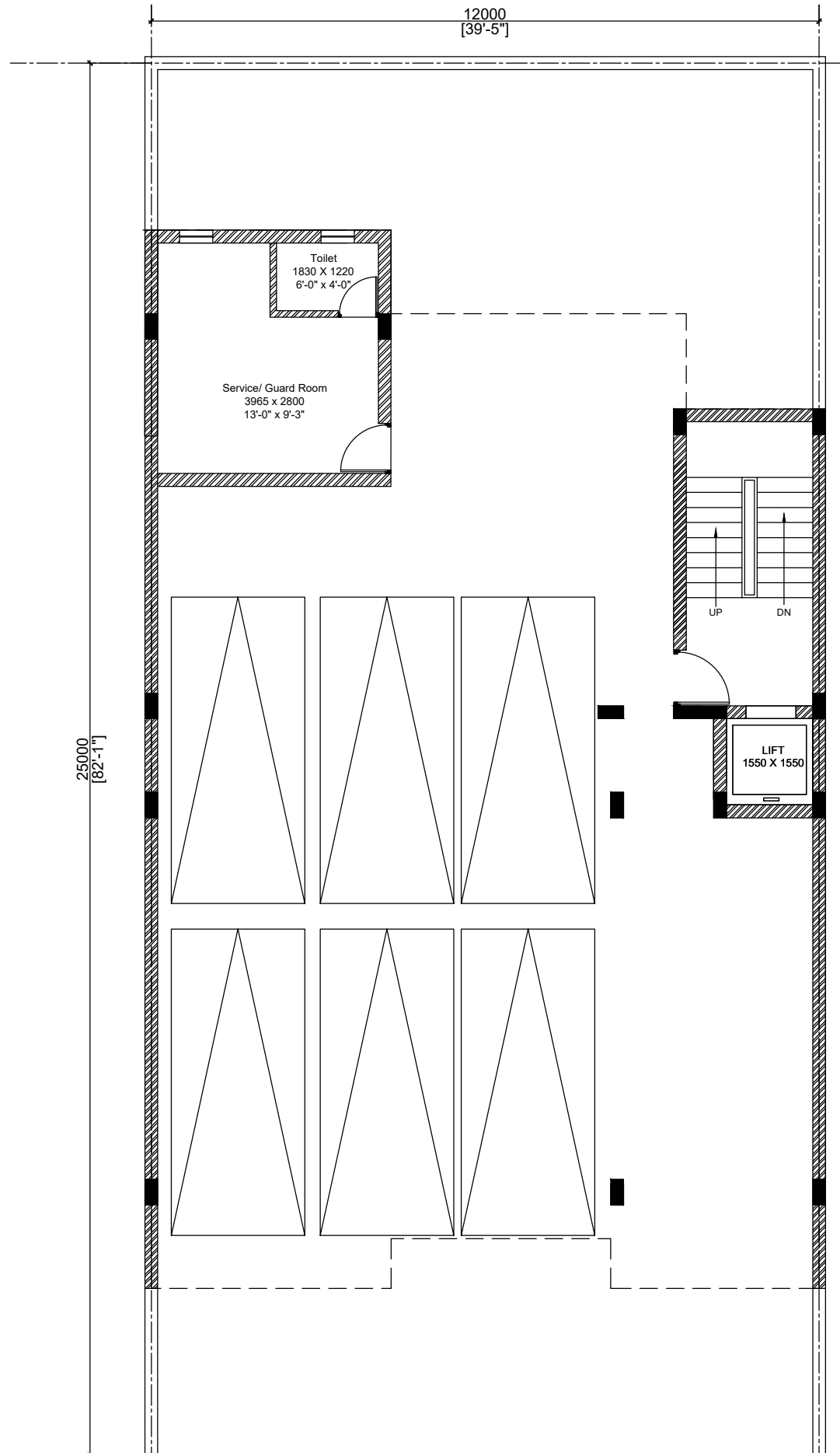
TYPE C (300 SQM / 358.80 SQYDS)		
FLOOR	SALEABLE AREA AS PER SOLD	SUPER AREA IN REVISED OPTION
	SQ FT	SQ FT
BASEMENT	1252	1590
STILT		2246
TYPICAL FLOOR	1685	2382

**NOTE:**  
1. THE LAYOUT IS SUBJECT TO APPROVAL FROM  
COMPETENT AUTHORITIES

# TYPE C (300 SQM / 358.80 SQYDS) WITH PURCHASABLE FAR



**GROUND FLOOR PLAN  
ORIGINAL OPTION**

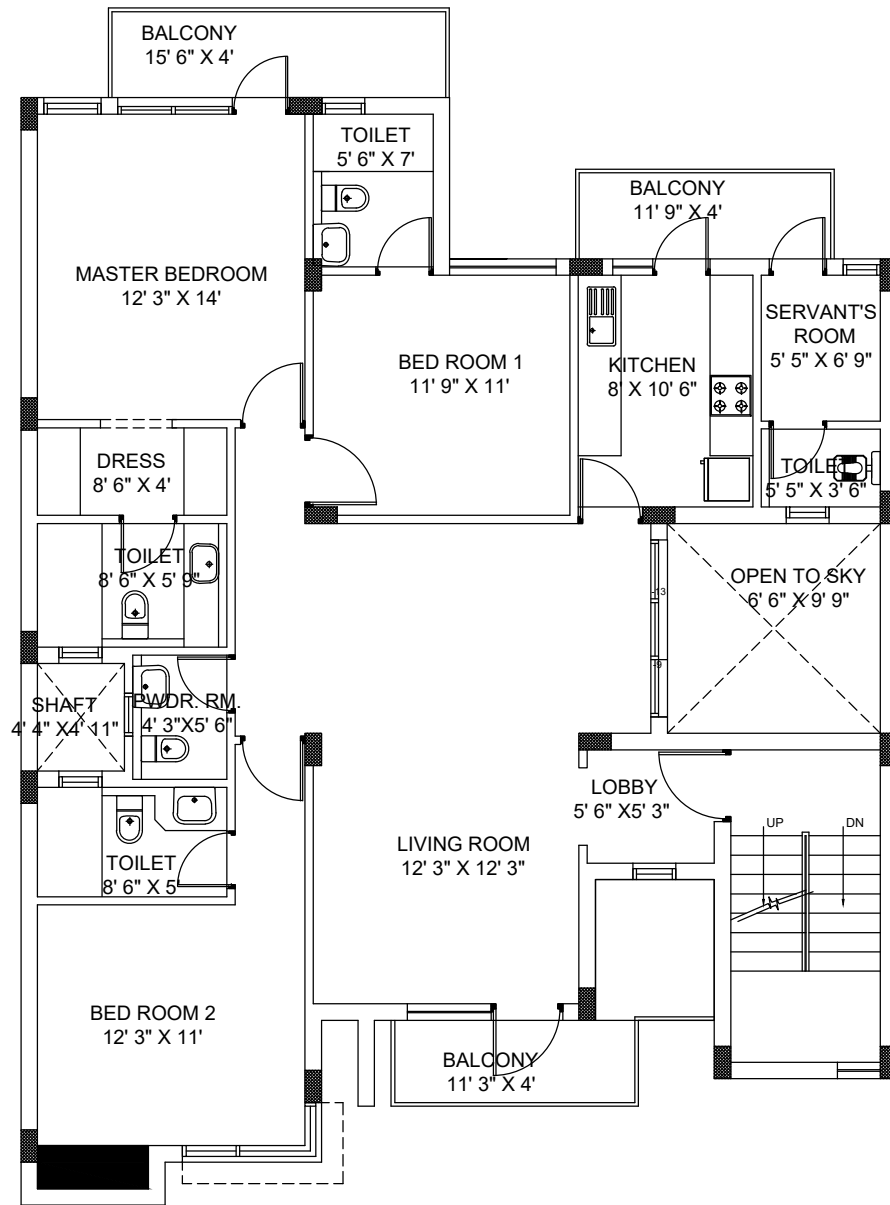


**STILT FLOOR PLAN  
STILT FLOOR PLAN  
REVISED OPTION**

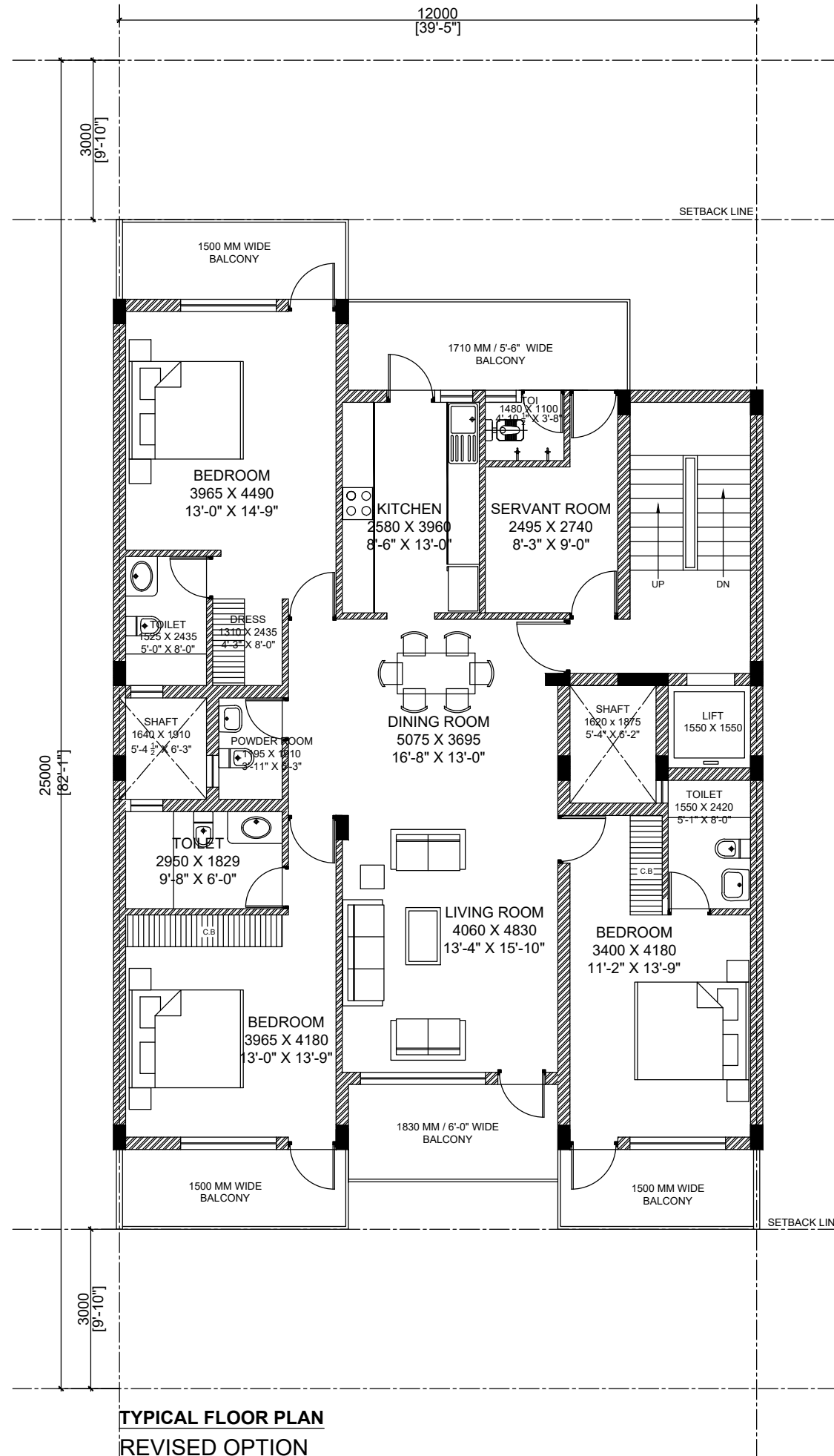
TYPE C (300 SQM / 358.80 SQYDS)		
FLOOR	SALEABLE AREA AS PER SOLD	SUPER AREA IN REVISED OPTION
	SQ FT	SQ FT
BASEMENT	1252	1590
STILT		2246
TYPICAL FLOOR	1685	2382

**NOTE:**  
1. THE LAYOUT IS SUBJECT TO APPROVAL FROM  
COMPETENT AUTHORITIES

# TYPE C (300 SQM / 358.80 SQYDS) WITH PURCHASABLE FAR



**FIRST FLOOR PLAN**  
ORIGINAL OPTION



**TYPICAL FLOOR PLAN**  
REVISED OPTION

TYPE C (300 SQM / 358.80 SQYDS)		
FLOOR	SALEABLE AREA AS PER SOLD	SUPER AREA IN REVISED OPTION
	SQ FT	SQ FT
BASEMENT	1252	1590
STILT		2246
TYPICAL FLOOR	1685	2382

**NOTE:**  
1. THE LAYOUT IS SUBJECT TO APPROVAL FROM  
COMPETENT AUTHORITIES